

MERIDIAN

OPERATOR'S MANUAL



CONVENTIONAL AUGER

HD7-33 • HD7-39 • HD7-46 • HD7-53

DECLARATION OF CONFORMITY

We the Manufacturer:

**Meridian Manufacturing Inc.
PO Box 1996 2800 Pasqua Street North
Regina, Sk,Canada
S4P 3E1**

Declare the Augers listed below conform to the 2006/42/EC Machinery
Directive

HD7-33
HD7-39
HD7-46
HD7-53

WFN 911-915

The Meridian HD7 Series Belt Drive Screw Conveyor and Tube Assembly
is designed for the movement of Grains and Cereals.

TABLE OF CONTENTS

GENERAL

- A1 Declaration of Conformity
- A2 Table of Contents
- A3 Sign Off Sheet

SAFETY

- B1 Safety Symbols
- B2 Safety & General Safety
- B3 Equipment Safety Guidelines
- B4 Safety Training & Safety Signs
- B5 Preparation
- B6 Operation Safety
- B7 Maintenance & Lock-Out/Tag-Out Safety
- B8 Required Tools
- B9 Machine Inspection
- B10 Design Work Area
- B11 Safety Guard Description
- B12 Transport and Placement
- B13 Safety Sign Location
- B14 Auger Drive and Lock-Out

OPERATION

- C1 Start Up and Break In
- C2 Lubrication and Maintenance

ASSEMBLY

- D1 Main Frame & A-Frame Assembly
- D2 Tube Assembly
- D3 Belt Drive PTO Conversion

PARTS

- E1 Head - End Assembly
- E2 Gear Box Assembly
- E3 Main Frame Assembly
- E9 A-Frame Assembly
- E13 Motor Mount Assembly
- E15 Tube Assembly
- E23 PTO Attachment
- E24 PTO Assembly
- E25 Winch Assembly
- E26 General Parts

INDEX

- F1 Parts Index

WARRANTY

- G1 Warranty and Disclaimer

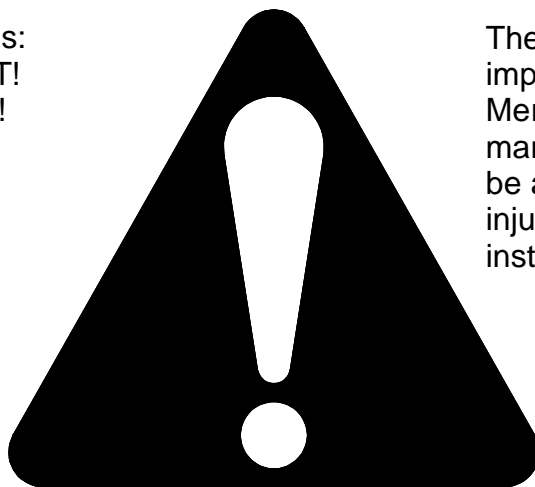
MERIDIAN GRAIN EQUIPMENT SIGN OFF SHEET

As a requirement of OSHA, it is necessary for the employer to train the employee in the safe operation and safety procedures with this equipment. We include this sign-off sheet for your convenience and personal record keeping.

[illegible]

SAFETY SYMBOLS

This Safety Alert Symbol means:
ATTENTION! BECOME ALERT!
YOUR SAFETY IS INVOLVED!



The Safety Alert Symbol identifies important safety messages on the Meridian Equipment and in the manual. When you see this symbol, be alert to the possibility of personal injury or death. Follow the instructions in the safety message.

Why is SAFETY important to you?

3 Big Reasons:

Accidents Disable and Kill
Accidents Cost
Accidents Can Be Avoided

SIGNAL WORDS:

Note the use of the signal words **DANGER**, **WARNING** and **CAUTION** with safety messages. The appropriate signal word for each message has been selected using the following guide-lines.

DANGER:

Indicates an imminently hazardous situation that, if not avoided, will result in death or serious injury. This signal word is to be limited to the most extreme situation typically for machine components which, for functional purpose, cannot be guarded.

WARNING:

Indicates a potentially hazardous situation that, if not avoided, could result in death or serious injury and includes hazards that are exposed when guards are removed. It may also be used to alert against unsafe practices.

CAUTION:

Indicates a potentially hazardous situation that, if not avoided, may result in minor or moderate injury. It may be used to alert against unsafe practices.

Failure to read this Transport Equipment Manual and its Safety Instructions is a misuse of the equipment.

If you have any questions not answered in the manual, require additional copies or the manual is damaged, please contact your dealer or Meridian Manufacturing Inc.

PO Box 1996 2800 Pasqua Street North, Regina SK, S4P 3E1
1-800-667-5904 (T) 1-306-545-4216 (F) www.meridianmfg.com

SAFETY & GENERAL SAFETY

SAFETY

YOU are responsible for the **SAFE** operation and maintenance of your Meridian Equipment. You must ensure that you and anyone else who is going to operate, maintain or work around the equipment be familiar with the operation and maintenance procedure and related **SAFETY** information contained in this manual.

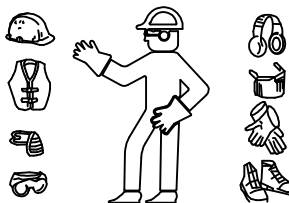
Remember, **YOU** are the key to safety. Good safety practices not only protect you but also the people around you. Make these practices a working part of your safety program. Be certain that **EVERYONE** operating this equipment is familiar with the recommended operation and maintenance procedures and follow the safety precautions. Most accidents can be prevented. Do not risk injury or death by ignoring good safety practices.

- Equipment owners must give operating instructions to operators or employees before allowing them to operate the machine, and at least annually thereafter.
- A person who has not read and understood all operating and safety instructions is not qualified to operate the machine. An untrained operator exposes themselves and bystanders to possible serious injury or death. Always be and stay alert to any possible unsafe operating or maintenance procedures or conditions.
- Do not modify the equipment in any way. Unauthorized modification may impair the function and/or safety of the components and systems and could affect the life of the equipment, possibly invalidate the warranty coverage.
- Think SAFETY! Work SAFELY!

GENERAL SAFETY

1. Read and understand the operator's manual and all safety signs before operating, maintaining, adjusting, or unplugging the equipment.
2. Have a first-aid kit available for use should the need arise and know how to use it.
3. Have a fire extinguisher available for use should the need arise and know how to use it.
4. Wear appropriate gear. The list includes but not limited to:

- A Hard hat
- Protective shoes with slip resistant soles
- Protective goggles, glasses or face shield
- Heavy gloves
- Protective clothing
- Respirator



5. Install and secure all guards before starting.
6. Establish a Lock-out/Tag-out policy for work site. Be sure all personnel are trained and follow all procedures. Lock-out/Tag-out all power sources before entering bin or working around loading/unloading equipment.
7. Clear the area of people, especially small children, before starting.
8. Review safety related items annually with all personnel who will be using or maintaining the Equipment.

EQUIPMENT SAFETY GUIDELINES

1. Safety of the operator and bystanders is one of the main concerns in designing and developing a machine. However, every year many accidents occur which could have been avoided by a few seconds of thought and a more careful approach to handling equipment. You, the operator, can avoid many accidents by observing the following precautions in this section. To avoid personal injury or death, study the following precautions and insist those working with you, or for you, follow them.
2. In order to provide a better view, certain photographs or illustrations in this manual may show an assembly with a safety shield removed. However, equipment should never be operated in this condition. Keep all shields in place. If shield removal becomes necessary for repair, replace the shield prior to use.
3. Replace any safety sign or instruction sign that is not readable or is missing. See Safety Sign Locations for the locations of such safety signs.
4. Never use alcohol or drugs which can hinder alertness or coordination while operating the equipment. Consult your doctor about operating this machine while taking prescription medications.
5. Under no circumstances should your children be allowed to work with this equipment. Do not allow persons to operate or assemble this unit until they have read this manual and have developed a thorough understanding of the safety precautions and of how it works. Review the safety instructions with all users annually.
6. This Equipment is dangerous to children and persons unfamiliar with its operation. The operator should be a responsible, properly trained and physically able person familiar with farm machinery and trained in this equipment's operation. If the elderly are assisting with farm work, their physical limitations need to be recognized and accommodated. Never exceed the limits of a piece of machinery. If its ability to do a job, or to do so safely, is in question - DO NOT TRY IT!
7. Do not modify the equipment in any way. Unauthorized modifications can result in serious injury or death and may impair the function and life of the equipment.
8. In addition to the design and configuration of this implement, including Safety Signs and Safety Equipment, hazard control and accident prevention are dependent upon the awareness, concern, prudence and proper training of personnel involved in the operation, transport, maintenance and storage of the machine. Refer also to Safety message and operation instructions in each of the appropriate sections of the auxiliary equipment and machine manuals. Pay close attentions to the Safety Signs affixed to the auxiliary equipment and the machine.

SAFETY TRAINING & SAFETY SIGNS

SAFETY TRAINING

1. Safety is a primary concern in the design and manufacture of our products. Unfortunately, our effort to provide safe equipment can be wiped out by a single careless act of an operator or bystander.
2. In addition to the design and configuration of equipment, hazard control and accident prevention are dependent upon the awareness, concern, prudence and proper training of personnel involved in the operation, transport, maintenance and storage of this equipment.
3. It has been said, "The best safety feature is an informed, careful operator." We ask you to be that kind of operator. It is the operator's responsibility to read and understand ALL Safety and Operating instructions in the manual and to follow these. Accidents can be avoided.
4. Working with unfamiliar equipment can lead to careless injuries. Read this manual and the manual for your auxiliary equipment, before assembly or operating, to acquaint yourself with the machines. If this machine is used by any person other than yourself, it is the machine owner's responsibility to make certain that the operator, prior to operating:
 - a) Reads and understands the operator's manuals.
 - b) Is instructed in safe and proper use.
5. Know your controls and how to stop the auger, conveyors and any other auxiliary equipment quickly in an emergency. Read this manual and the one provided with your other equipment.
6. Train all new personnel and review instructions frequently with existing workers. Be certain only a properly trained and physically able person will operate the machinery. A person who has not read and understood all operating and safety instructions is not qualified to operate the machine. An untrained operator exposes themselves and bystanders to possible serious injury and death. If the elderly are assisting with farm work, their physical limitations need to be recognized and accommodated.



SAFETY SIGNS

1. Keep safety signs clean and legible at all times.
2. Replace safety signs that are missing or become illegible.
3. Replaced parts that previously displayed a safety sign should also display the current sign.
4. Safety signs are available from your authorized Distributor or Dealer Parts Department or the factory.

How to Install Safety Signs:

- Be sure that the installation area is clean and dry.
- Be sure temperature is above 50°F (10°C).
- Determine exact position before you remove the backing paper.
- Remove the smallest portion of the split backing paper.
- Align the sign over the specified area and carefully press the small portion with the exposed sticky backing in place.
- Slowly peel back the remaining paper and carefully smooth the remaining portion of the sign in place.
- Small air pockets can be pierced with a pin and smoothed out using the piece of sign backing paper.

PREPARATION

1. Never operate the Equipment and auxiliary equipment until you have read and completely understand this manual, the auxiliary equipment operator's manual, and each of the safety messages found on the safety signs on the equipment and auxiliary equipment.

2. Personal protection equipment including hard hat, safety glasses, safety shoes and gloves are recommended during assembly, installation, operation, adjustment, maintaining, repairing, removal, or moving the implement. Do not allow long hair, loose fitting clothing or jewelry to be around the equipment.



3. **PROLONGED EXPOSURE TO LOUD NOISE MAY CAUSE PERMANENT HEARING LOSS!**

The motor or equipment attached can often be noisy enough to cause permanent or partial hearing loss. We recommend that you wear hearing protection on a full-time basis if the noise in the operator's position exceeds 80db. Noise over 85db on a long-term basis can cause severe hearing loss. Noise over 90db adjacent to the operator over a long-term basis may cause permanent, total hearing loss.



NOTE: Hearing loss from loud noise (from tractors, chain saws, radios and other sources close to the ear) is cumulative over a lifetime without hope of natural recovery.

4. Clear area of debris, trash or hidden obstacles that might be hooked or snagged, causing injury, damage or tripping.

5. Operate only in daylight or good artificial light.

6. Be sure machine is properly anchored, adjusted and in good operating condition.

7. Ensure that all safety shields and safety signs are properly installed and in good condition.

8. Before starting, give the machine a look over for any loose bolts, worn parts, cracks, leaks, frayed belts and make necessary repairs. Always follow maintenance instructions.

OPERATING SAFETY

1. Make sure that anyone who will be operating the equipment or working on or around the unit read and understand all the operating, maintenance and safety information in the operator's manual.
2. Have another person nearby who can shut down the equipment in case of accident. It is good practice to always work with a second person around the equipment.
3. Do not operate with any safety shields removed.
4. Inspect the lift cable before using the equipment. Replace if frayed or damaged.
5. Ensure that equipment is empty before raising or lowering.
6. Operate equipment on level ground. Even though the equipment is connected to the tractor during operation, tipping can occur.
7. Keep hands, feet and clothing away from moving parts. Loose clothing can become entangled in rotating parts and cause serious injury.
8. Keep all bystanders, especially children, away from the equipment in use, or when authorized personnel are carrying out maintenance work.
9. Establish a Lock-out/Tag-out policy for work site. Be sure all personnel are trained in and follow all procedures. Lock-out/Tag-out all power sources before working around the equipment.
10. Review safety related items annually with all personnel who will be operating, using or maintaining the equipment.

MAINTENANCE & LOCK-OUT/TAG-OUT SAFETY

MAINTENANCE SAFETY

1. Good maintenance is your responsibility. Poor maintenance is an invitation to trouble.
2. Follow good shop practices.
 - Keep service area clean and dry.
 - Be sure electrical outlets and tools are properly grounded.
 - Use adequate light for job at hand.
3. Review safety related items annually with all personnel who will be operating, using or maintaining the equipment.
4. Use personal protection devices such as eye, hand, breathing and hearing protection, when performing any services or maintenance work.
5. A fire extinguisher and first aid kit should be kept readily accessible while performing maintenance on this equipment.
6. Periodically tighten all bolts, nuts and screws to ensure the unit is in safe condition.
7. When completing a maintenance or service function, make sure all safety shields and devices are installed before placing unit in service.



LOCK-OUT/TAG-OUT SAFETY

1. Establish a formal Lock-Out/Tag-Out program for you operation.
2. Train all operators and service personnel before allowing them to work around the equipment.
3. Provide tags at the work site and sign-up sheets to record tag out details.

REQUIRED TOOLS FOR ASSEMBLY & MAINTENANCE



HARD HAT



WORK GLOVES



SAFETY GLASSES



WRENCHES



EAR PROTECTION



WRENCH & SOCKETS



STEEL TOE WORK BOOTS



GREASE & OIL

SAFETY ALERT SYMBOLS



This symbol is used to call your attention to instructions concerning your personal safety. Watch for this symbol - it points out important safety precautions. It means "ATTENTION - Become Alert! Your Safety Is Involved!" Read the message that follows and be alert to the possibility of personal injury or death.

MACHINE INSPECTION

- Check to see that all guards listed in the assembly instructions are in place and secured, and functional.
- Check winch and cable for security and operation. There should be at least 3 complete wraps of cable around winch drum in full down position. Cable anchor on winch drum must be tight.
- Are all fasteners tight?
- Are all chains properly adjusted. (See Maintenance Section)
- Check oil levels in gear box. (See Maintenance Section)

OPERATOR QUALIFICATIONS

Operation of this transport equipment shall be limited to competent and experienced persons. In addition, anyone who will operate or work around portable equipment must use common sense. In order to be qualified, they must know and meet all other requirements, such as:

- Some regulations specify that no one under the age of 16 may operate power machinery. This includes augers and flight type elevators. It is your responsibility to know what these regulations are in your area or situation.
- Current OSHA regulations state in part: "At the time of initial assignment and at least annually thereafter, the employer will instruct **every** employee in the safe operation and servicing of all equipment with which the employee is, or will be involved."
- Unqualified persons are to **stay out** of the work areas.
- A person who has not read and understood all the operating and safety instructions is not qualified to operate the machine.

DESIGNATED WORK AREA

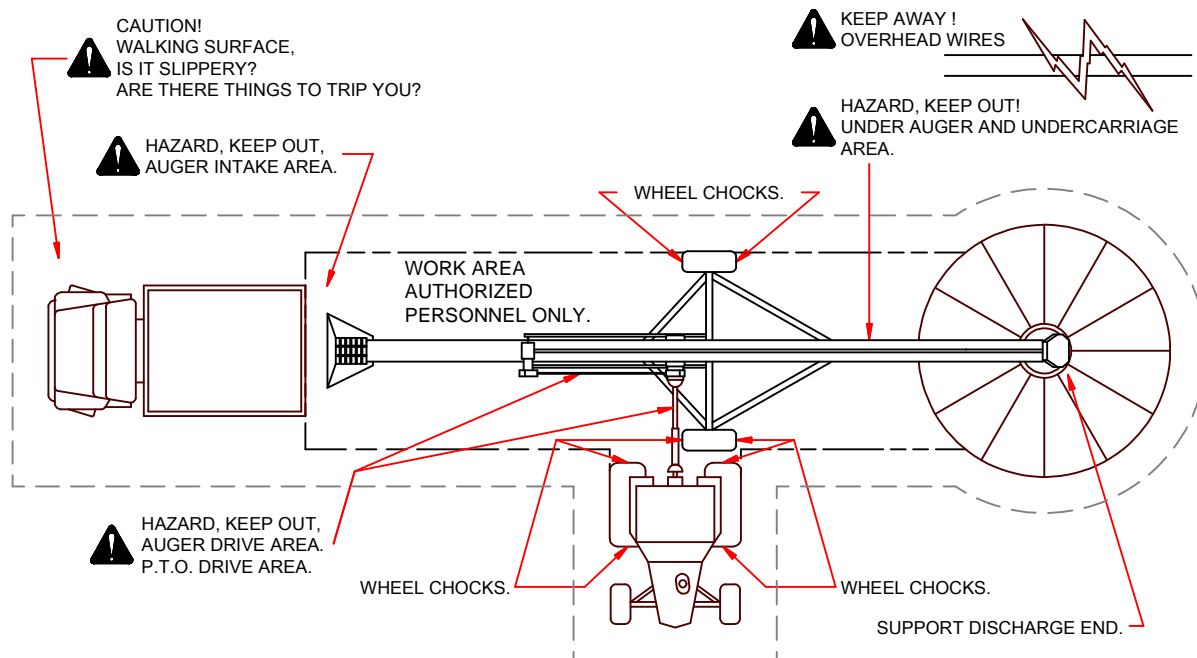
The following diagrams will show the designated work areas. These areas shall be marked off with coloured nylon or plastic rope hung by portable barriers to define the designated work areas.

Under no circumstance should persons not involved in the operation be allowed to trespass into the work area.

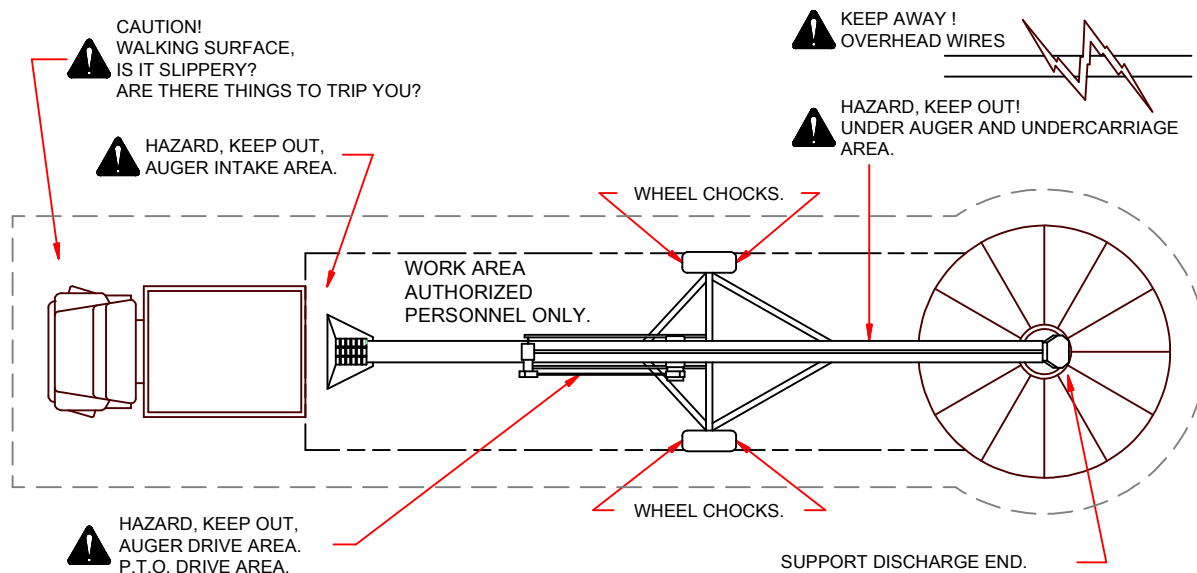
It shall be the duty of all operators to see that children and/or other persons stay out of the work area! Trespass into the area by anyone not involved in the actual operation, or trespass into a hazard area by anyone, shall result in an immediate shut down by the operator.

Prior to start up and during operation, it shall be the responsibility of the operators to see that the work area has secure footing, is clean and free from all debris, and tools which might cause accidental tripping and/or falling.

P.T.O. BELT DRIVE



GAS, ELECTRIC DRIVE



SAFETY GUARD DESCRIPTION



HEAD - END



INTAKE FORK

GEAR BOX PULLEY
GUARDGEAR BOX SHAFT
GUARD

ENGINE PULLEY GUARD

PTO ATTACHMENT
GUARDTUBULAR DRIVE SHAFT
GUARD

TRANSPORT AND PLACEMENT

MOVING THE AUGER WITH THE TOWING VEHICLE TO OR FROM THE WORK AREA

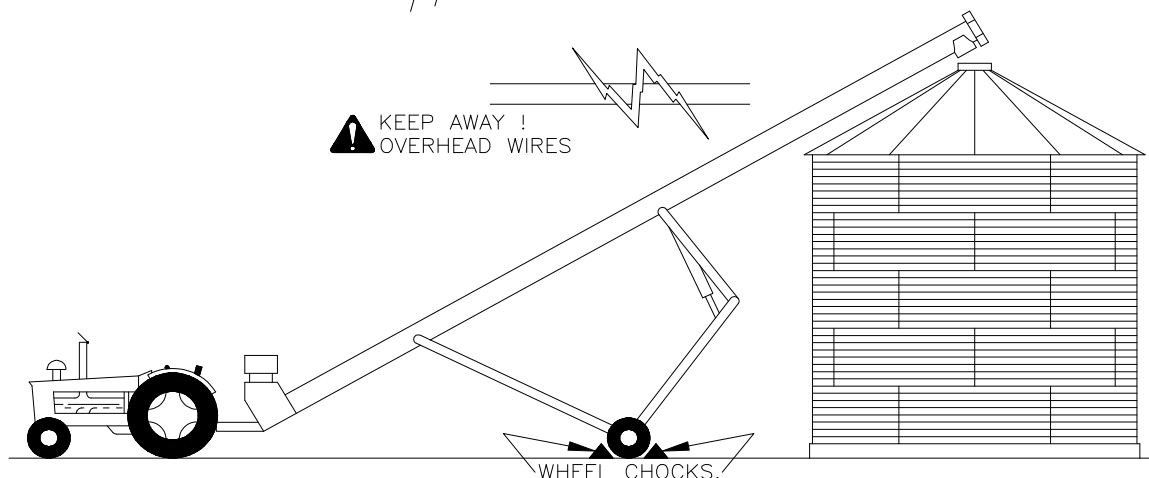
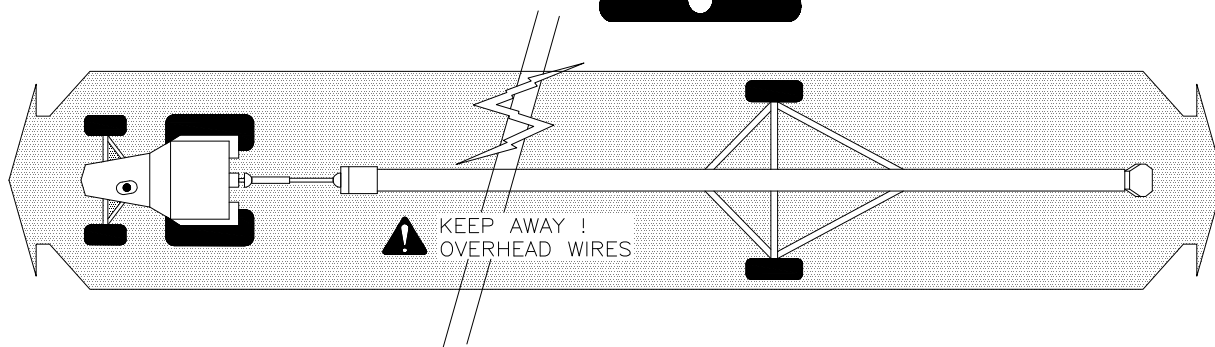
- Always transport your auger in the full down position. The Tube Assembly should be seated in the A-Frame cradle.
- Make sure that the hitch pin is securely attached and an alternate safety chain is secure to the auger and towing vehicle.
- Ensure Lift Arm Safety Chain is attached to the Hopper.
- Once the auger is hitched to the vehicle, ensure that the jack is swung up into the transport position
- Be alert of overhead obstructions and electrical wires. Electrocutation can occur without direct contact. Failure to do so will result in severe injury or death.
- Never allow persons to stand underneath or ride on the auger when it is being transported.

MOVING THE AUGER WITH THE TOWING VEHICLE INTO OR OUT OF ITS WORKING POSITION.


- Always move an auger with a vehicle, never manually.
- Lift slowly, no higher than hitch bar. Be sure grain is out of tube and auger is on level surface.
- Do not place lumber under wheels for increased height.
- Before raising, check for power lines.
- When auger is in place, anchor intake end and/or discharge end and chock wheels.
- When in transport or placement PTO shaft to be disconnected.



**OVERHEAD WIRES
KEEP AWAY!**




SAFETY SIGN LOCATIONS



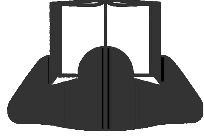
CAUTION

1. Do not operate this machine before reading and understanding the operator's manual.
2. Do not operate this machine unless all guards and safety devices are securely in place.
3. Do not adjust, service, lubricate, clean, unclog or move this unit until all power has been shut off.
4. Make certain everyone is clear of the equipment before moving or operating. Never allow children, visitors or untrained personnel in the area.
5. Keep hands, feet and clothing clear of all moving parts while in operation.
6. Support discharge end or anchor intake end to prevent upending.
7. Empty machine and lower to transport position before moving to prevent upending.
8. Lower this unit to transport position when not in use.
9. When raising or lowering machine watch for overhead powerlines and other obstructions.
10. Disengage belt tension release on motor base before starting motor.
11. Disconnect power on electric motor driven units before resetting motor overload, make certain electric motors are properly grounded.
12. Always make certain that trained personnel are in attendance while unit is in operation.

1653




WARNING




To Prevent Serious Injury or Death

- Avoid unsafe operation or maintenance.
- Do not operate or work on this machine without reading and understanding the operator's manual.
- If manual is lost, contact your nearest dealer for a new manual.

1654



DANGER



Upending Hazard

The intake end of the machine must always have downward weight.


Always test it before releasing it from the vehicle or holddown.

Lift the intake slowly and keep it no higher than the tractor tow bar when attaching or releasing it.


Immediately lower the machine to transport position before moving.

Failure to do so will cause upending, which will result in serious injury or death.

1655



DANGER




ROTATING FLIGHTING


Keep away from intake end. Failure to do so will result in serious injury or death.

Do not use the machine without intake guard in place.

1657



DANGER



ELECTROCUTION HAZARD

To prevent serious injury or death from electrocution:

- Stay away from overhead powerlines when transporting or raising machines. This machine is not grounded. Electrocution can occur without direct contact.

1656

AUGER DRIVES AND LOCK OUT

PTO

PTO - Shaft

1. Never use a PTO Shaft without a rotating shield in good working order. Also see that the power drive system safety shields are in place at the auger gear box and the power source.
2. Be certain that the PTO shaft is securely attached to the gear box and the power source.
3. Before starting power source, be certain power to PTO is off.
4. Stay out of the hazard area of an operating PTO.

Lock Out

1. Remove ignition key or coil wire from power source. If this is impossible, remove the PTO shaft from the work area.

ELECTRIC

Power Source

1. Electric motors and controls shall be installed by a qualified electrician and must meet the standards set by the National Standards Electrical Code.
2. A magnetic starter should be used to protect your motor.
3. You must have a manual reset button.
4. You must disconnect power before resetting your motor.
5. Reset and motor controls must be located so the operator has full view of the entire operation.
6. Keep all guards and shields in place.

Lock Out

1. A main power disconnect switch capable of being locked only in the Off position shall be provided. This shall be locked whenever work is being done on the auger.

GASOLINE DRIVES

Power Source

1. Never attempt to adjust or service engine while it is in operation.
2. Shut down and allow engine to cool before filling with fuel.
3. Keep all guards and shields in place.

Lock Out

1. For engines with ropes or crank start - remove spark plug wire or spark plug.
2. For engines with electric start - remove ignition key, spark plug wire or spark plug.

START UP AND BREAK IN

NEW AUGER START-UP AND BREAK-IN

Meridian Manufacturing Inc. recommends that before you start augering grain with your new auger that you should do the following:

1. Run the grain auger at approximately $\frac{1}{2}$ the normal operating speed (270 rpms with PTO) without adding grain to the intake for approximately five minutes.
2. Bring auger up to full operation speed (540 rpms with PTO) and slowly add grain to intake of auger.
3. Continue to add grain slowly until approximately 1000 bushels (28 tonnes) has been run through the grain auger. This will "shine up" the flighting and the tube.
4. The operator should be aware if any unusual vibrations or noises, determine source, shut off, LOCK OUT power source and adjust.

OLD AUGER START-UP AND BREAK- IN

Meridian Manufacturing Inc. recommends that before augering grain with your used auger, you should do the following:

1. Before positioning the auger, be sure all guards and shields are in place, securely fastened and fully operational.
2. Check and fill, if necessary, all lubricating fluids and grease all fittings.

CAUTION

1. Observe work area restrictions (see work area diagram)
2. Keep all safety guards and shields in place.
3. Make certain everyone is clear before operating or moving the machine.
4. Keep hands, feet and clothing away from all moving parts.
5. Lock out power sources to adjust, service or clean.

EMERGENCY SHUT-DOWN

1. Should the auger be immediately shut down under load - disconnect and lock out the power source.

Clear as much grain from the hopper and auger as you can. Never attempt to start the auger full.

2. Starting the auger under load may result in damage to the auger. Such damage is considered abuse of the equipment.
3. Reconnect power source and clear grain gradually.

NORMAL SHUT-DOWN

1. Make sure that the hopper and auger are empty before stopping unit.
2. Before the operator leaves the work area, the power source shall be locked out.

CLEAN-UP AND STORAGE

When the operation is completed, it is recommended that you move the auger to the new work area or to a storage area:

1. Clean entire work area.
2. Remove anchors, supports and chocks.
3. Mover auger slowly out of working position with towing vehicle --- not by hand. (see transport and placement)
4. When augering out of bin is complete, do not attempt to pull an axle with tractor to remove from bin. This will bend the auger.
5. If not in transport position, lower auger to the full down position immediately upon clearance of any obstruction.
6. Transport to new work area or storage area. We recommend that the auger be stored in the full down position with intake end anchored.
7. Do not attempt to pull grain auger out of snow bank in winter. This will cause damage to the tube assembly.
8. Make certain that there is no snow build up on auger tube or frame, which will bend the auger frame or auger tube.

AUGER LUBRICATION AND MAINTENANCE

DANGER - Do not service or lubricate while the auger is running. **LOCK OUT THE POWER SOURCE.**

GEAR BOX

1. Fill gear box with #90 gear oil quantity as per chart:

AUGER SIZE	QUANTITY
HD7	1 Litre
HD8	1 Litre
HD10	2 Litre
TL10	1 Litre
TL12	2 Litre

2. Do not over fill gear box.
3. Change oil once a year or every 20,000 bushels (550 tonnes) or when it gets contaminated with water.

DRIVE SHAFT BEARINGS

1. Grease once a day with good quality grease.

HEAD - END

1. The bearings are pre-lubricated and do not require further lubrication.
2. The sprockets and chain should be oiled with #130 gear oil once every season.
3. Keep chains snug, do not over tighten.

FORK BEARING

1. Grease every 1,000 or 2,000 bushels (28 or 54 tonnes) with good quality grease.

WHEEL BEARINGS

1. The wheel bearings are packed at the factory.
2. They should be cleaned and repacked once a year.

PTO SHAFT AND ATTACHMENT

1. PTO shaft and attachment should be greased once a day with good quality grease.

FRAME ASSEMBLY

NOTE: Reference to right and left hand used throughout this manual refers to the position standing at the intake end looking toward the head-end.

A-FRAME ASSEMBLY

1. Lay out the frame as shown in **Fig 1**
2. Install spindles in frame using the last or bottom holes in the A-Frame.
3. Place A-Frame so the stub on the Main Frame axle can be slid into the second hole on the A-Frame. Now do the same on the other side. Both pieces should be installed on the axle and be pointing in the opposite direction. (**Fig 1**)
4. Install A-Frame cross brace on A-Frame.
5. Mount gooseneck to the A-Frame, using the middle holes on the gooseneck and the upper end of A-Frame.
6. Install track roller brackets and track roller as shown in **Fig 2**. (do not tighten)
7. When assembling swing augers, install lift cable roller at the upper end of gooseneck.
8. Mount tires on rims and mount rims on axle spindles.

MAIN FRAME ASSEMBLY

1. Lay frame out as shown in **Fig 1**
2. Fasten Main Frame to axle using 7/16" dia. bolts. (do not tighten)
3. Install Main Frame to axle braces and Main Frame cross brace at the same time.
4. Install winch base plate and belt idler bracket.
5. Bolt on winch.
6. Fasten battery mount.
7. Assemble cable roller bracket and mount frame.
8. Leave out two bolts on winch plate so Main Frame can be spread apart to fit on tube pins.

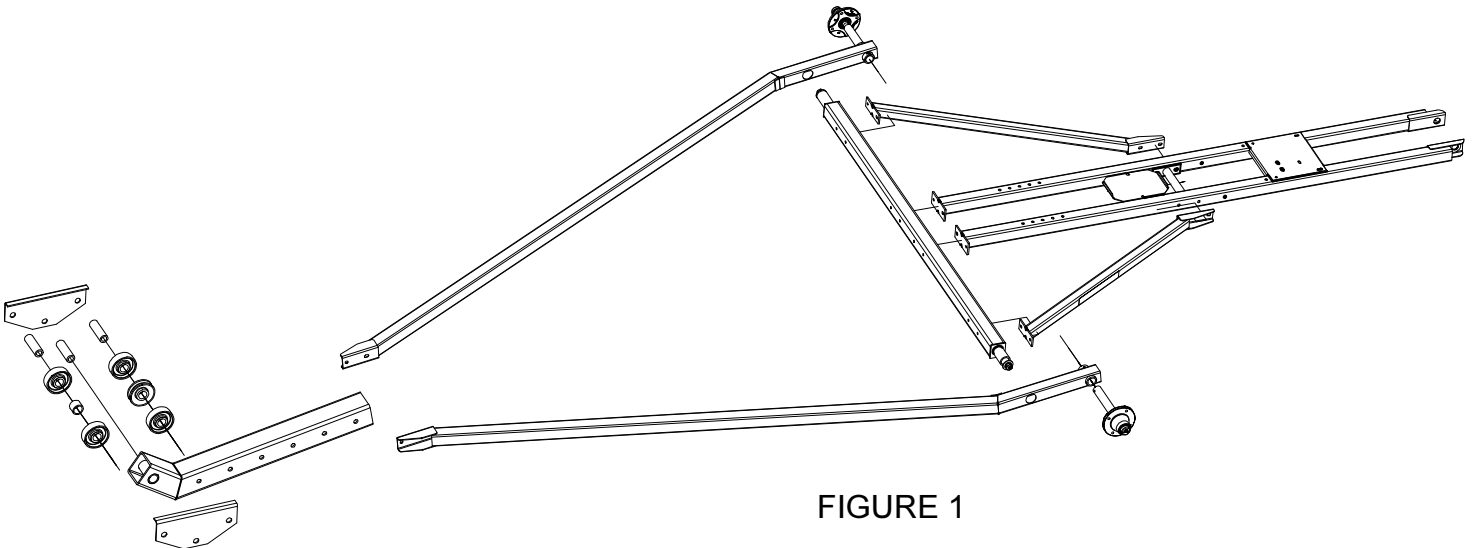


FIGURE 1

FIGURE 2

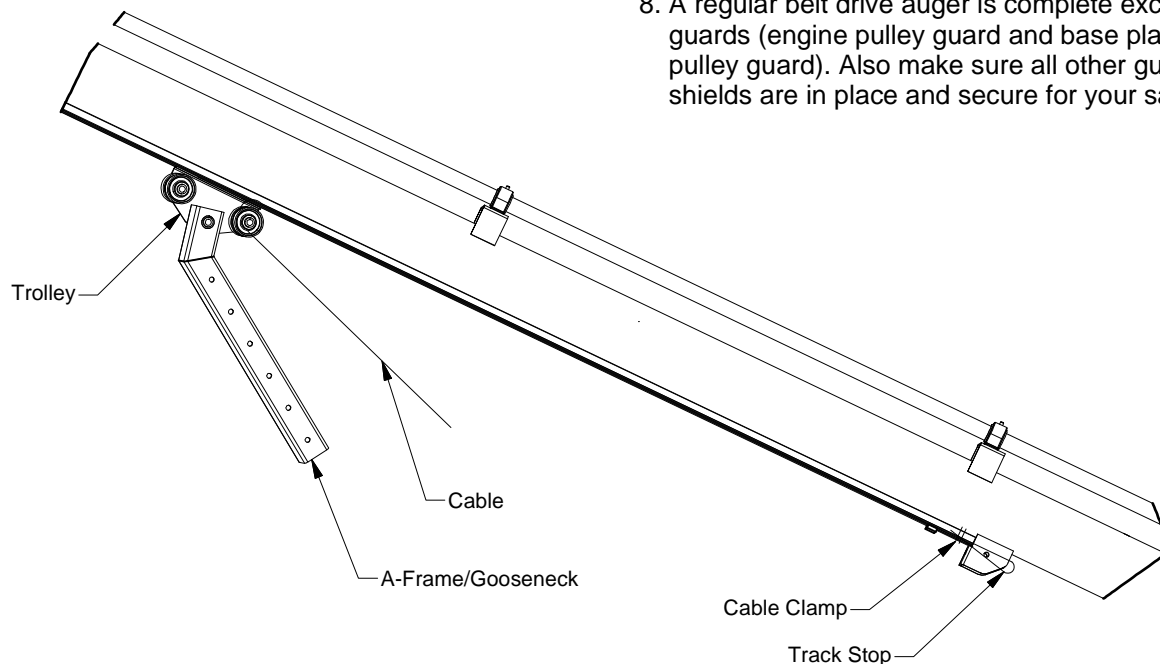
TUBE ASSEMBLY

ASSEMBLY

1. Tube assembly has been pre-assembled at the factory, at this time you should check the tube for damage.
2. After checking for damage, this is a good time to grease drive shaft bearings and oil head-end chains. Head-end bearings have been prelubricated.

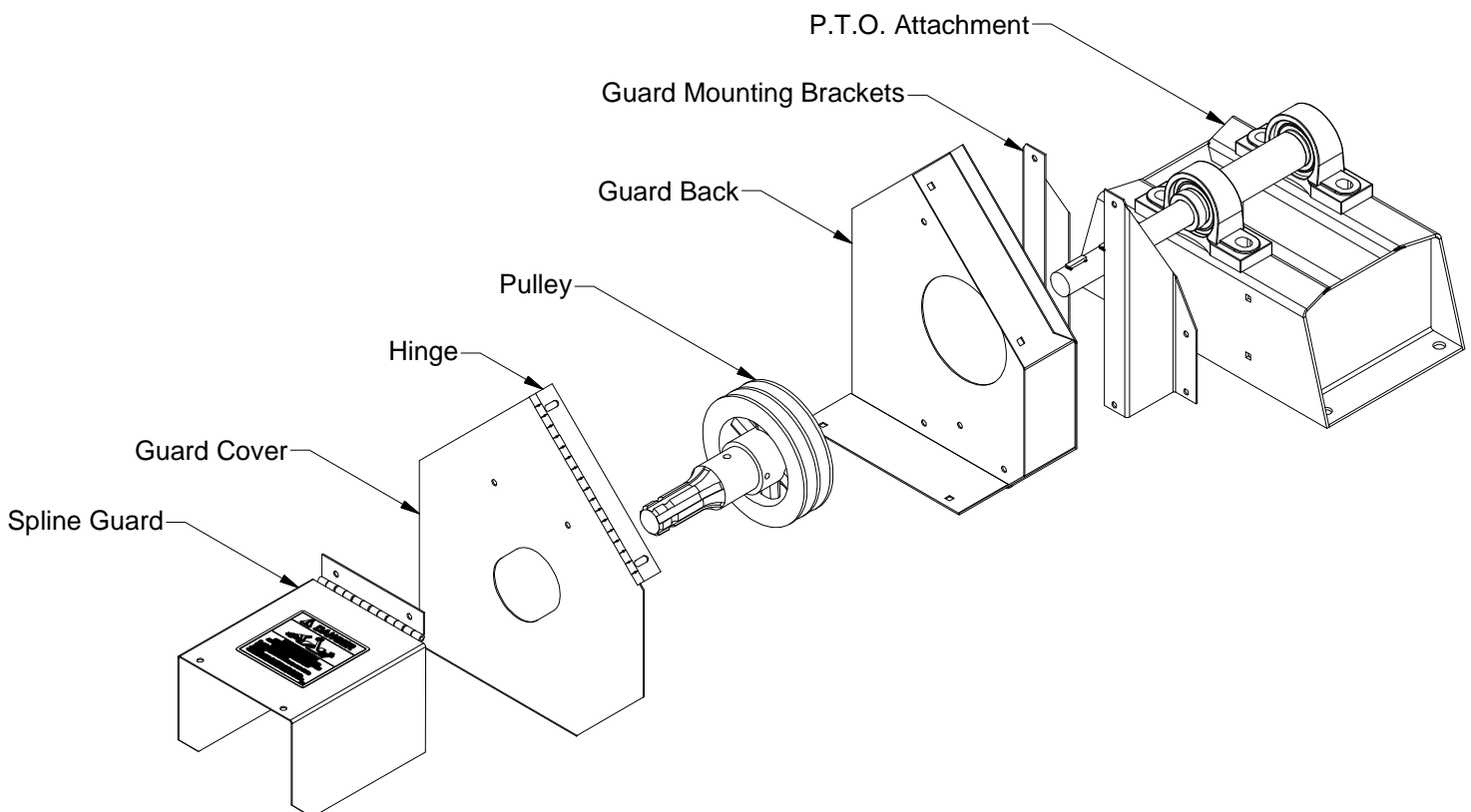
INSTALLATION

1. Raise head-end of the auger tube about 5 ft. Position the complete frame under the auger tube. Place A-Frame to head-end, and Main Frame to intake end. At this time you should run the cable around the grooved roller on the gooseneck.
2. Lift A-Frame up to head-end of the track on the bottom of the auger tube. Spread track roller brackets and fit over track, then tighten.
3. Make sure that the track rollers are well lubricated and rotate freely.
4. Now raise the head-end of the auger tube high enough to allow the Main Frame to fit on the steel pins of the tube assembly. These are the same pins that the truss cable eyebolts are mounted to.
5. Roll frame back to allow the frame to line up to the tube assembly. Then tighten all the bolts on the complete frame and insert all other frame bolts.
6. Lower the auger to the ground and allow the A-Frame to rest against the track stop.
7. Attach cable to the bottom track stop with cable clamp. Cable will already be threaded through the cable roller in the gooseneck (done in previous step). The cable then runs around the Main Frame cable roller and then to the winch. Allow 3 wraps of cable around the winch drum before cable is tight.
8. A regular belt drive auger is complete except for safety guards (engine pulley guard and base plate, gear box pulley guard). Also make sure all other guards and shields are in place and secure for your safety.

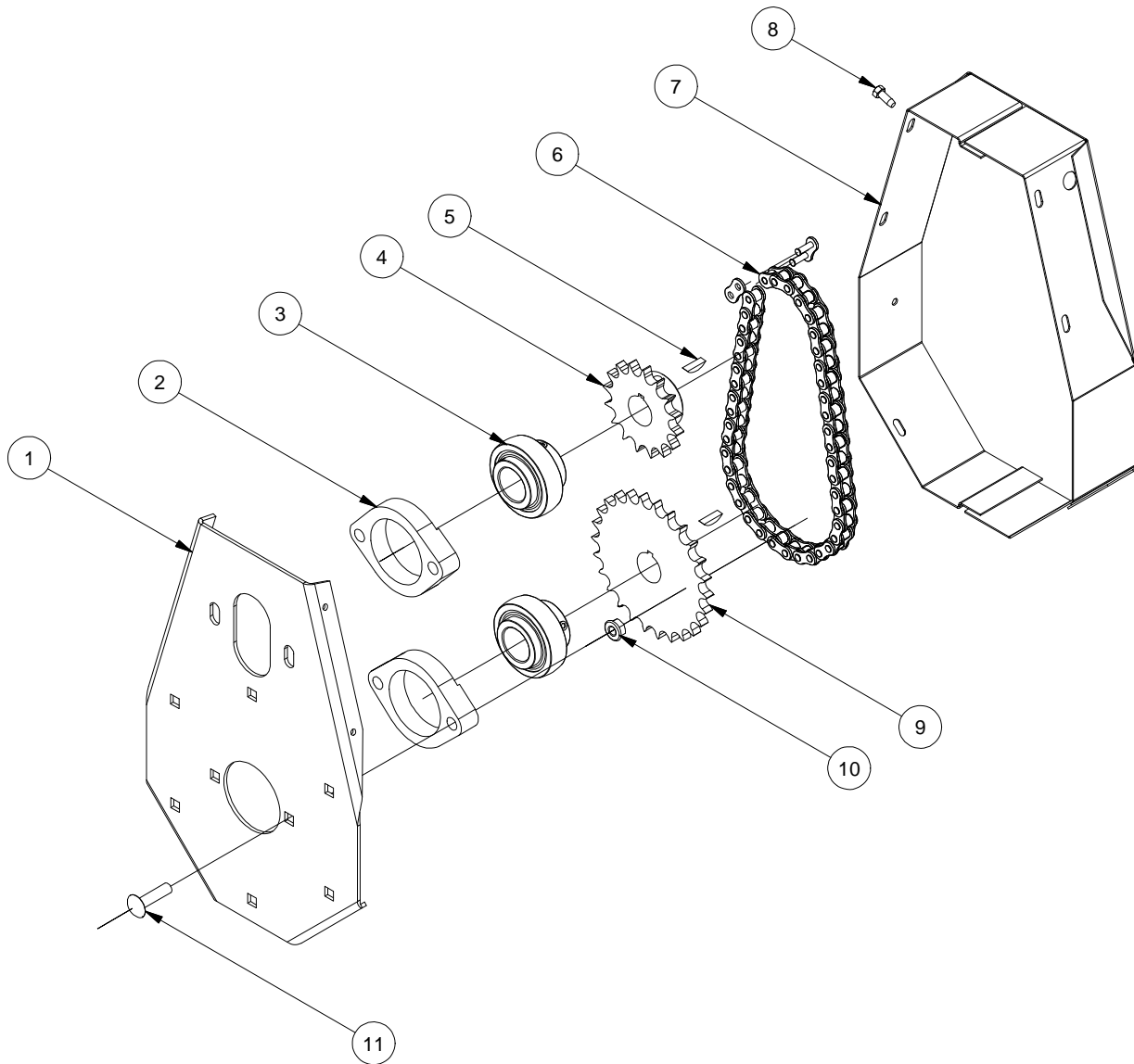


BELT DRIVE ASSEMBLY

1. Mount PTO base onto motor mount base (leave bolts loose).
2. Bolt guard mounting brackets to PTO base on the side that has bolt holes. The small end of the bracket bolts onto the PTO base.
3. Bolt the guard base to the large end of the brackets.
4. Take the V-pulley in the PTO kit and mount it on the gear box of the main auger tube. Hub of the V-pulley must face into gear box.
5. Take the old V-pulley from the gear box and mount it on the PTO shaft of the PTO base. Face the hub of the V-pulley into the PTO base.
6. Bolt guard cover onto guard base.
7. Slide splined coupler onto PTO drive shaft and then tighten the screws.
8. Bolt cover guard to V-pulley guard.

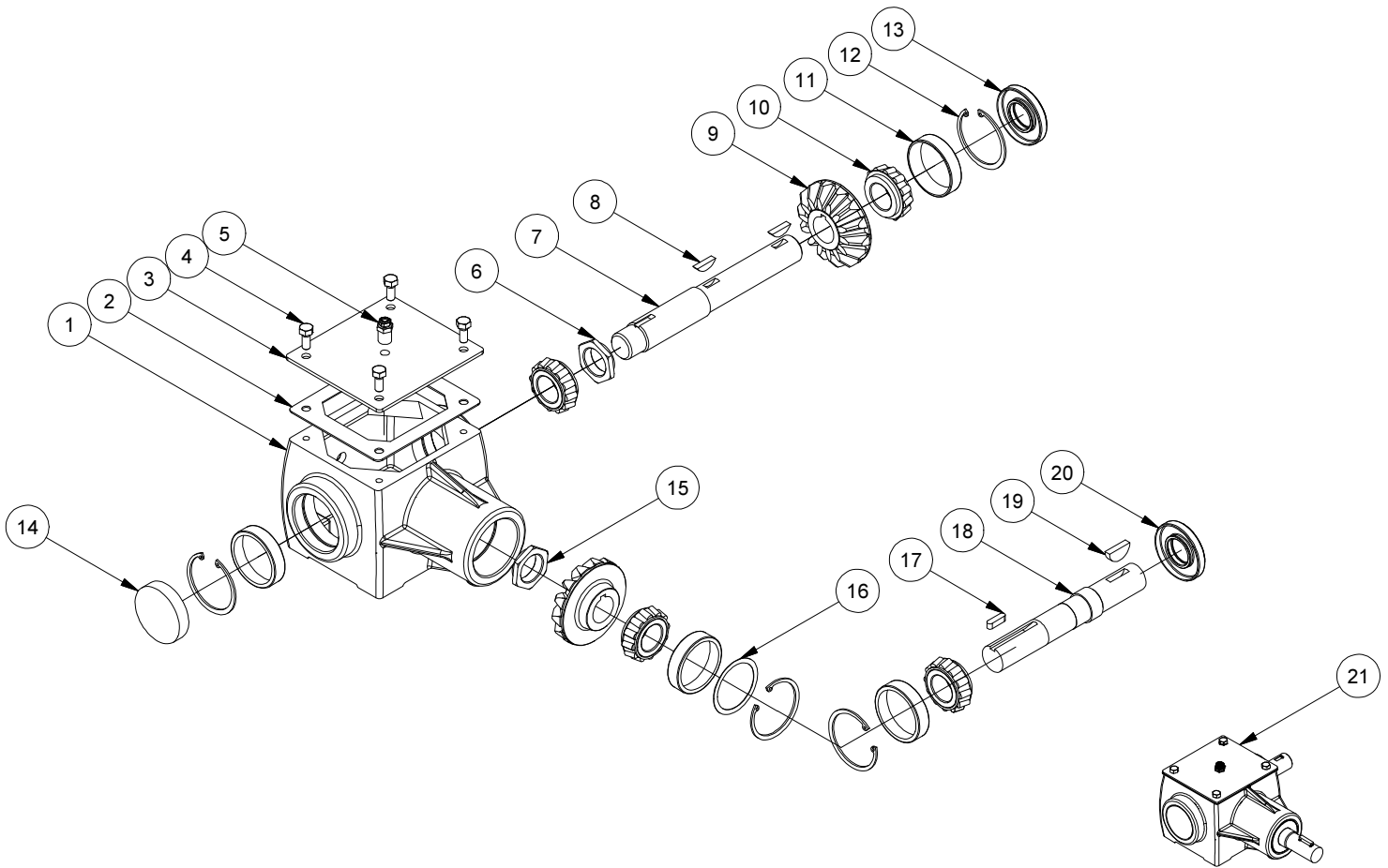


HEAD END



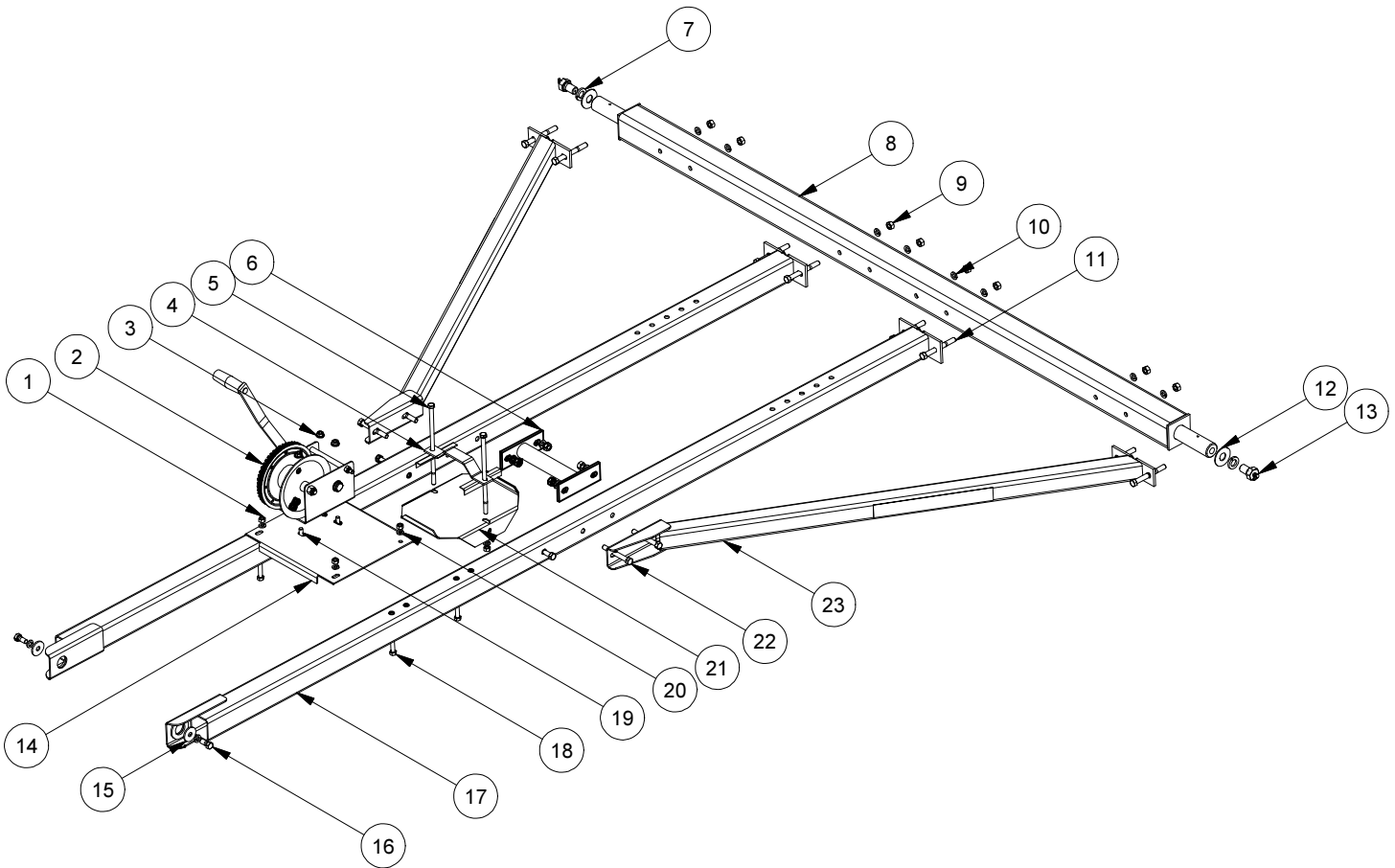
HD7			
REF #	PART #	QUANTITY	DESCRIPTION
1	13000002394-00	1	Head End - 7 Inch
2	13000002484-00	2	Bearing Ball c/w Housing & Collar
3	13000002401-00	2	Bearing Insert c/w Locking Collar
4	13000001665-00	1	Sprocket - 50B16 - 1-1/8"
5	13-0740-00807	2	Woodruff Key, 1/4" x 7/8"
6	13000001667-00	1	Chain c/w Connecting Link 50-1-43
7	13000002346-00	1	Cover Head End - 7 Inch
8	13-0706-04010	6	Self Threading Screw - 1/4" x 5/8"
9	13000001080-00	1	Sprocket - 50B26 - 1-1/8"
10	13-0731-00006	4	Flange Lock Nut 3/8-16
11	13-0709-06024	4	Carriage Bolt 3/8 x 1-1/2 - 16

GEAR BOX



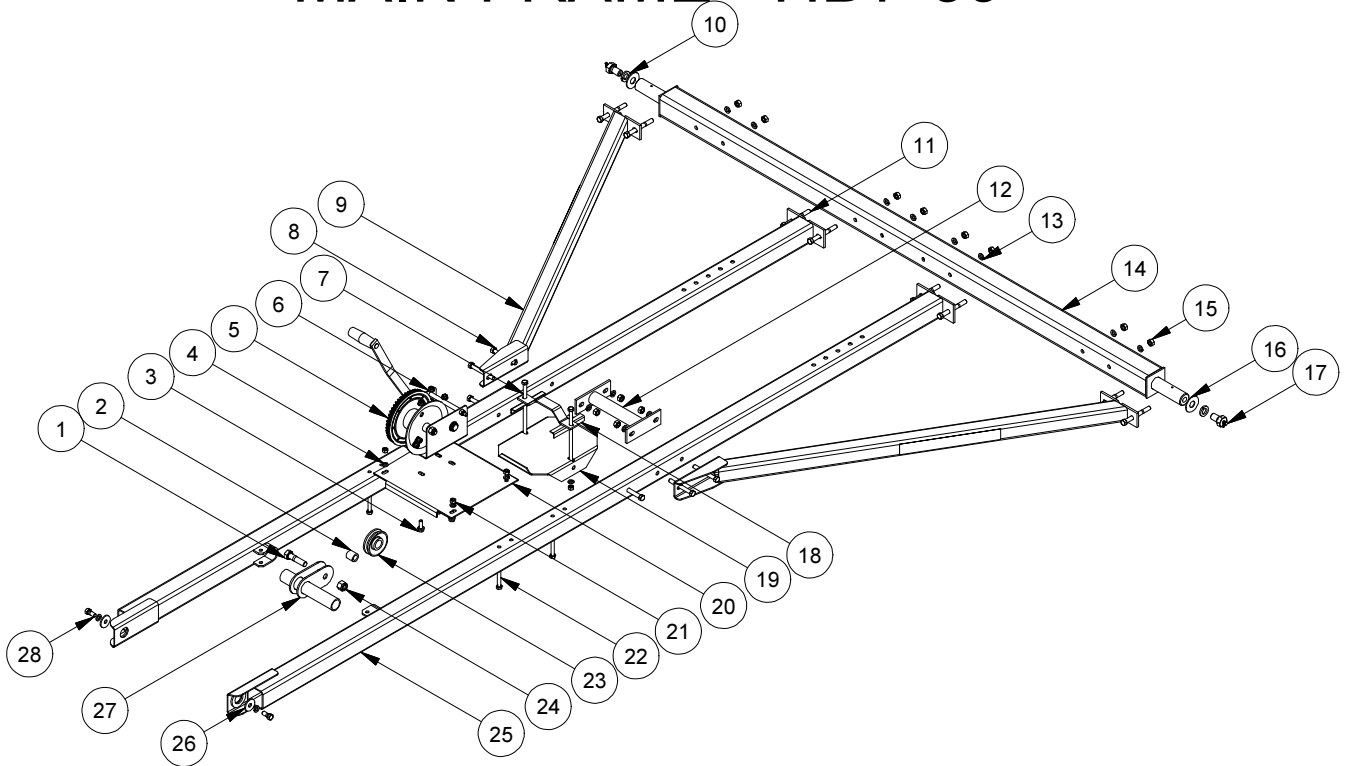
HD7			
REF #	PART #	QUANTITY	DESCRIPTION
1	13000001086-00	1	Gear Box Housing
2	13000001085-00	1	Cover Gasket
3	13000001084-00	1	Gear Box Cover
4	13-0702-05012	4	Hex Cap Screw 5/16 x 3/4 - 18
5	13000001083-00	1	Vent Plug & Bushing
6	13000001087-00	1	Adjusting Nut - 1-1/4
7	13000002959-00	1	Output Shaft
8	13-0740-00808	2	Woodruff Key, 1/4" x 1"
9	13000001093-00	2	Bevel Gear - 1 1/8" Bore
10	13000001088-00	4	Tapered Roller Bearing - Cone
11	13000001089-00	4	Tapered Roller Bearing - Cup
12	13000001091-00	4	Snap Ring
13	13000001095-00	1	Oil Seal - 1 1/8" ID
14	13000001092-00	1	Cap
15	13000001094-00	1	Adjusting Nut - 1-1/8 in x 18 Thread
16	13000001090-00	As Req'd	Shim
17	13000004637-00	1	Key - 1/4" x 1/4" x 1.85"
18	13000001240-00	1	Input Shaft
19	13-0740-00809	1	Woodruff Key, 1/4" x 1 1/8"
20	13000001206-00	1	Oil Seal - 1 1/4" ID
21	13000001242-00	-	Gearbox Complete

MAIN FRAME - HD7-33



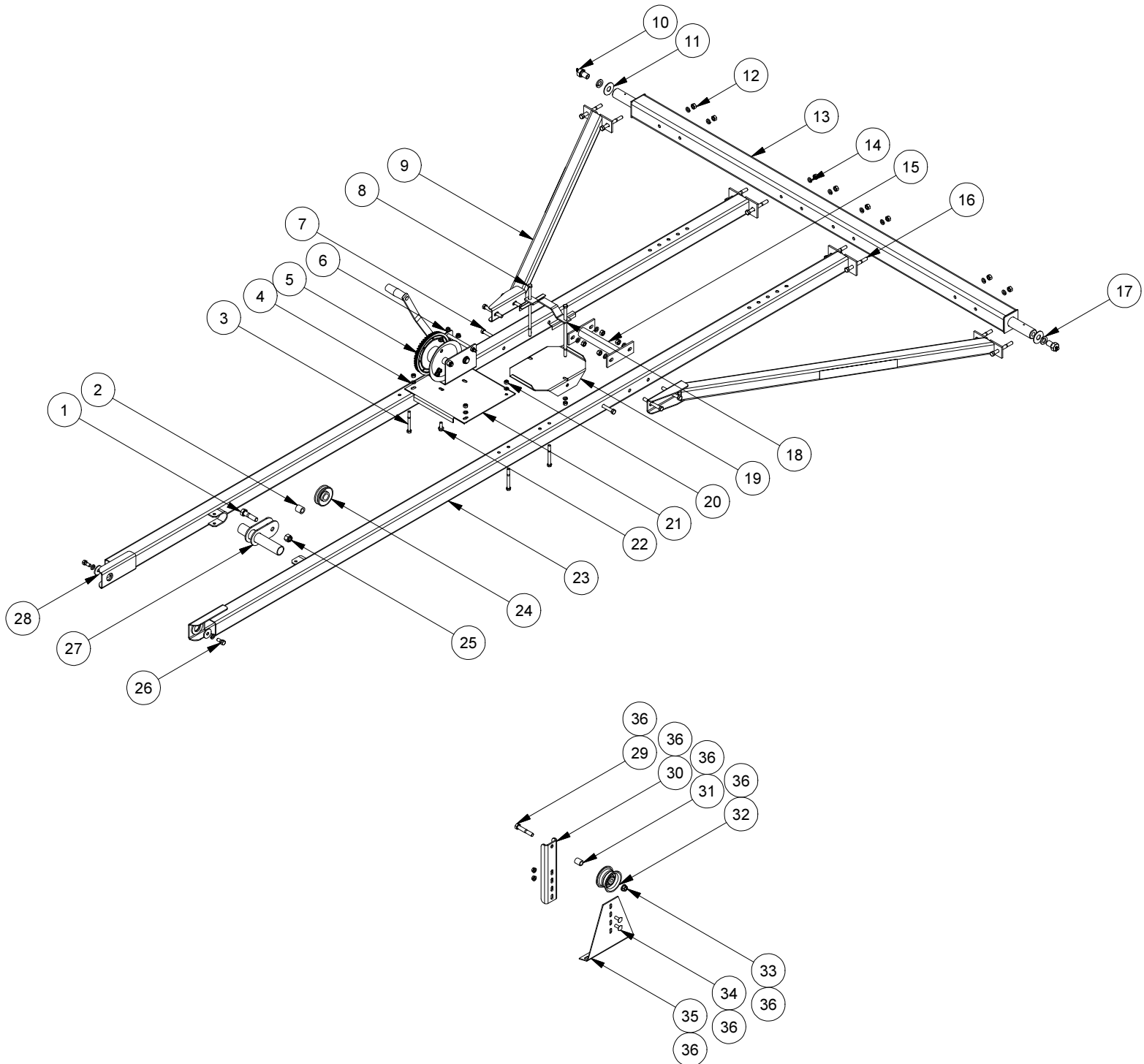
HD7-33			
REF #	PART #	QUANTITY	DESCRIPTION
1	13-0725-00006	6	Hex Nut 3/8 - 16
2	13000001671-00	1	K-1550 Fulton Winch
3	13-0731-00006	3	Flange Lock Nut 3/8" - 16
4	13000001924-00	1	Battery Top Mount
5	13-0702-06144	2	Hex Cap Screw 3/8" x 9" - 16
6	13000002017-00	1	Cross Brace
7	13-0734-00012	2	Spring Lock Washer - 3/4"
8	13000002370-00	1	Axle
9	13-0725-00007	14	Hex Nut - 7/16" - 14
10	13-0734-00007	16	Spring Lock Washer - 7/16"
11	13-0702-07064	8	Hex Cap Screw 7/16 x 4 - 14
12	13-0735-00012	2	Flat Washer 3/4
13	13000001926-00	2	Zerk Bolt Assembly
14	13000002016-00	1	Winch Base Plate
15	13000003117-00	2	Flat Washer - 7/16"
16	13-0702-07016	2	Hex Cap Screw - 7/16" x 1" - 14
17	13000002354-00	2	Frame Main
18	13-0702-06056	4	Hex Cap Screw - 3/8" x 3-1/2" - 16
19	13-0712-06016	3	Flange Lock Bolt 3/8 x 1 - 16
20	13-0734-00006	6	Spring Lock Washer - 3/8"
21	13000001921-00	1	Battery Mount
22	13-0702-07056	6	Hex Cap Screw - 7/16" x 3-1/2" - 14
23	13000002372-00	2	Axle Brace Assembly

MAIN FRAME - HD7-39

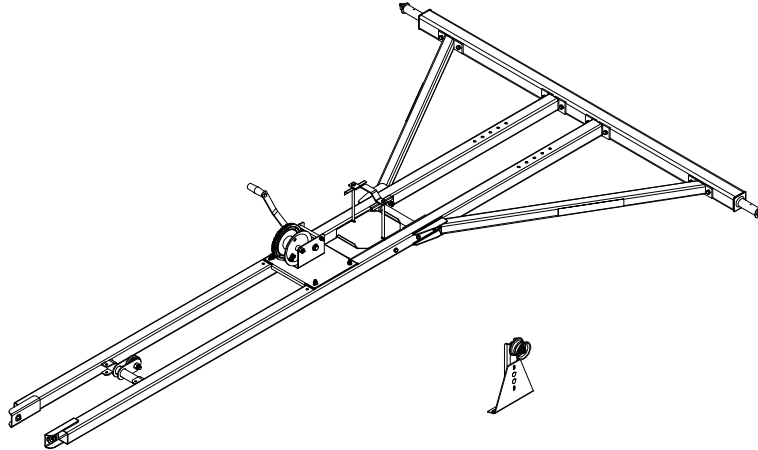


HD7-39			
REF #	PART #	QUANTITY	DESCRIPTION
1	13-0702-10040	1	Hex Cap Screw 5/8" x 2-1/2" - 11
2	13000001381-00	1	Cable Roller Bushing
3	13-0712-06016	3	Flange Lock Bolt 5/8" x 2-1/2" - 11
4	13-0734-00006	6	Spring Lock Washer - 3/8"
5	13000001671-00	1	K-1550 Fulton Winch
6	13-0731-00006	3	Flange Lock Nut 3/8" -16
7	13-0702-06144	2	Hex Cap Screw - 3/8" x 9" - 16
8	13-0702-07056	6	Hex Cap Screw - 7/16" x 3-1/2" -14
9	13000002372-00	2	Axle Brace Assembly
10	13-0734-00012	2	Spring Lock Washer - 3/4"
11	13-0702-07064	8	Hex Cap Screw - 7/16" x 4" - 14
12	13000002017-00	1	Cross Brace
13	13-0734-00007	16	Spring Lock Washers - 7/16"
14	13000002370-00	1	Axle
15	13-0725-00007	14	Hex Nut 7/16" - 14
16	13-0735-00012	2	Flat Washer - 3/4"
17	13000001926-00	2	Bolt 3/4" x 1-1/4" c/w Grease Zerk
18	13000001924-00	1	Battery Top Mount
19	13000001921-00	1	Battery Mount
20	13000002016-00	1	Winch Base Plate
21	13-0725-00006	6	Hex Nuts - 3/8" -16
22	13-0702-06056	4	Hex Cap Screw - 3/8" x 3-1/2" - 16
23	13000001017-00	1	Cable Roller
24	13-0729-00010	1	Nylon Lock Nut 5/8" - 11
25	13000002355-00	2	Frame Main
26	13000003117-00	2	Flat Washer - 7/16"
27	13000001707-02	1	Cable Roller Bracket
28	13-0702-07016	2	Hex Cap Screw - 7/16" x 1" - 14

MAIN FRAME - HD7-46

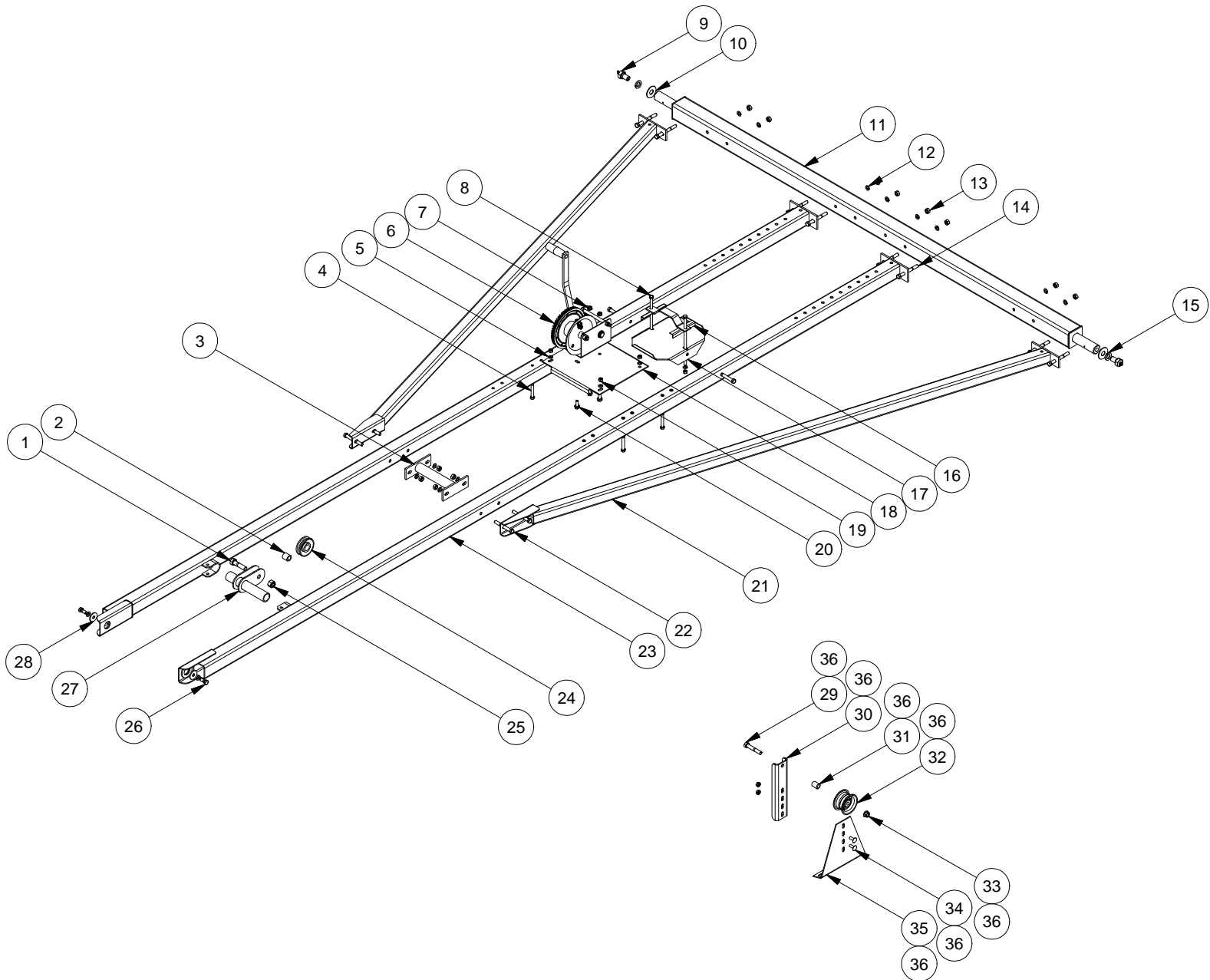


MAIN FRAME - HD7-46

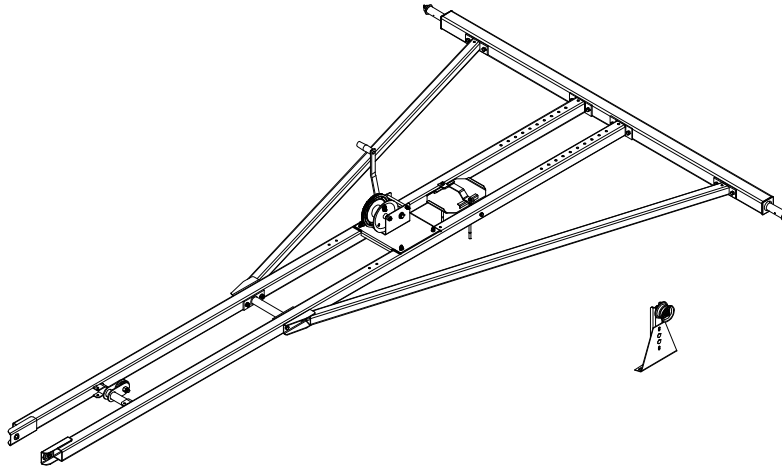


HD7-46			
REF #	PART #	QUANTITY	DESCRIPTION
1	13-0702-10040	1	Hex Cap Screw 5/8" x 2-1/2" - 11
2	13000001381-00	1	Cable Roller Bushing
3	13-0702-06056	4	Hex Cap Screw 3/8" x 3-1/2" - 16
4	13-0734-00006	6	Spring Lock Washer - 3/8"
5	13000001671-00	1	K-1550 Fulton Winch
6	13-0731-00006	5	Flange Lock Nut 3/8" - 16
7	13-0702-07056	6	Hex Cap Screw 7/16" x 3-1/2" - 14
8	13-0702-06144	2	Hex Cap Screw 3/8" x 9" - 16
9	13000002372-00	2	Axle Brace Assembly
10	13000001926-00	2	Bolt 3/4" x 1-1/4" c/w Grease Zerk
11	13-0735-00012	2	Flat Washer - 3/4"
12	13-0725-00007	14	Hex Nut 7/16 - 14
13	13000002370-00	1	Axle
14	13-0734-00007	16	Spring Lock Washer - 7/16"
15	13000002017-00	1	Cross Brace
16	13-0702-07064	8	Hex Cap Screw 7/16" x 4" - 14
17	13-0734-00012	2	Spring Lock Washer - 3/4"
18	13000001924-00	1	Battery Top Mount
19	13000001921-00	1	Battery Mount
20	13-0725-00006	6	Hex Nuts - 3/8" - 16
21	13000002016-00	1	Winch Base Plate
22	13-0712-06016	3	Flange Lock Bolt 3/8" x 1" - 16
23	13000002356-00	2	Frame Main
24	13000001017-00	1	Cable Roller
25	13-0729-00010	1	Nylon Lock Nut 5/8" - 11
26	13-0702-07016	2	Hex Cap Screw 7/16" x 1" - 14
27	13000001707-02	1	Cable Roller Bracket
28	13000003117-00	2	Flat Washer - 7/16"
29	13-0702-08048	1	Hex Cap Screw 1/2" X 3" - 13
30	13000003360-00	1	Bracket Channel
31	13000002440-00	1	Bushing
32	13000002441-00	1	Belt Idler
33	13-0731-00008	1	Flange Lock Nut 1/2" - 13
34	13-0709-06016	2	Carriage Bolt - 3/8" x 1" - 16
35	13000001383-00	1	Belt Idler Brace
36	13000002868-00	1	Belt Idler Kit

MAIN FRAME - HD7-53

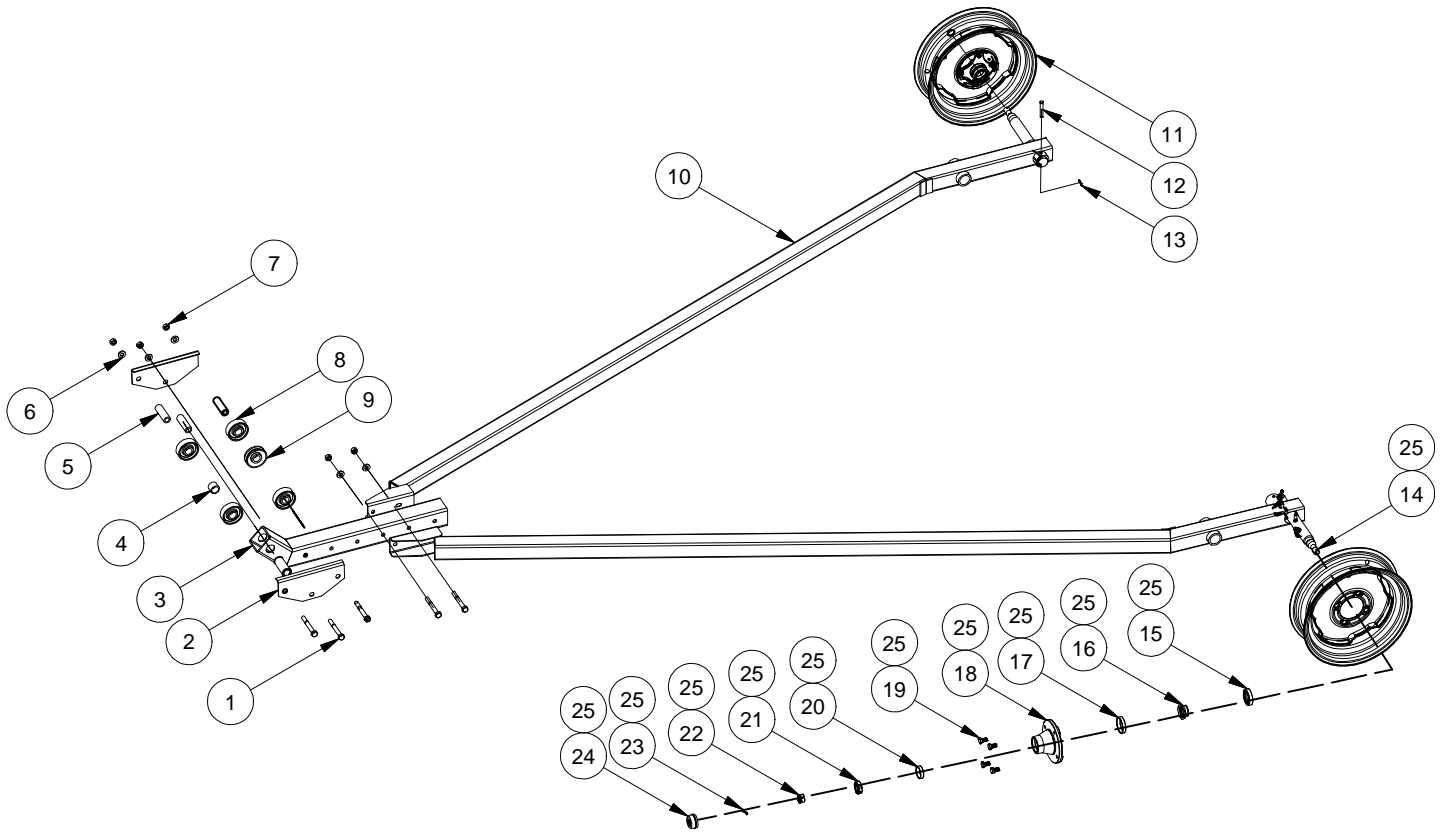


MAIN FRAME - HD7-53



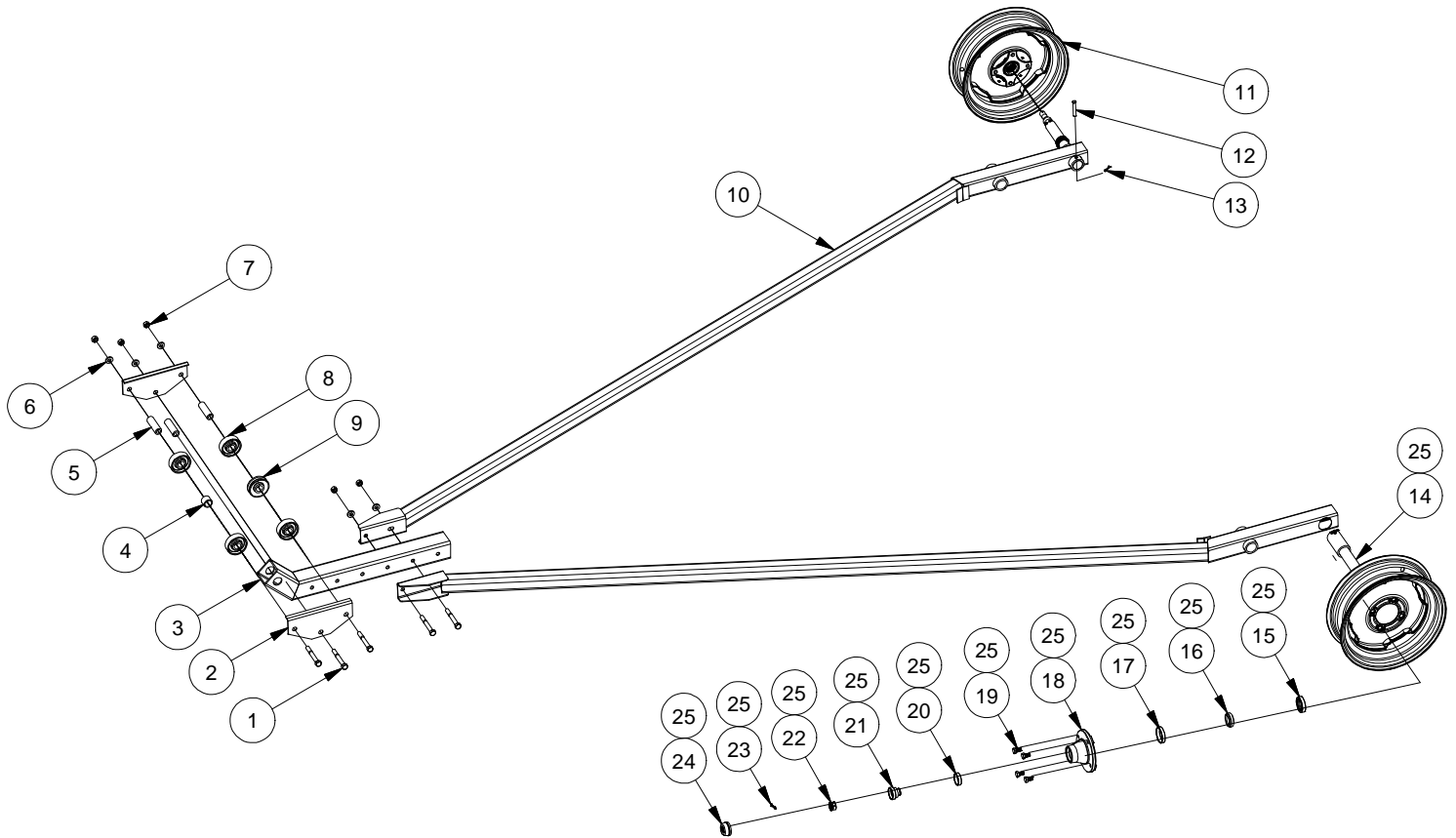
HD7-53			
REF #	PART #	QUANTITY	DESCRIPTION
1	13-0702-10040	1	Hex Cap Screw - 5/8 x 2-1/2 - 11
2	13000001381-00	1	Cable Roller Bushing
3	13000002017-00	1	Cross Brace
4	13-0702-06056	4	Hex Cap Screw - 3/8 x 3-1/2 - 16
5	13-0734-00006	6	Spring Lock Washer - 3/8"
6	13000001671-00	1	K-1550 Fulton Winch
7	13-0731-00006	5	Flange Locknut 3/8 - 16
8	13-0702-06144	2	Hex Cap Screw - 3/8 x 9-16
9	13000001926-00	2	Bolt 3/4 x 1-1/4
10	13-0735-00012	2	Flat Washer - 3/4"
11	13000002371-00	1	Axle
12	13-0734-00007	16	Spring Lock Washer - 7/16"
13	13-0725-00007	14	7/16" Hex Nut
14	13-0702-07064	8	Hex Cap Screw - 7/16 x 4-14
15	13-0734-00012	2	Spring Lock Washers - 3/4"
16	13000001924-00	1	Battery Top Mount
17	13000001921-00	1	Battery Mount
18	13000002016-00	1	Winch Base Plate
19	13-0725-00006	6	Hex Nuts - 3/8"
20	13-0712-06016	3	Flange Lock Nut 3/8 x 1 -16
21	13000002373-00	2	Brace - HD7/8-53
22	13-0702-07056	6	Hex Cap Screw - 7/16 x 3-1/2 - 14
23	13000002357-00	2	Frame Main
24	13000001017-00	1	Cable Roller
25	13-0729-00010	1	Nylon Locknut 5/8 - 11
26	13-0702-07016	2	Hex Cap Screw - 7/16 x 1 - 14
27	13000001707-02	1	Cable Roller Bracket
28	13000003117-00	2	7/16" Flat Washer
29	13-0702-08048	1	Hex Cap Screw 1/2 x 3 - 13
30	13000003360-00	1	Bracket Channel
31	13000002440-00	1	Bushing
32	13000002441-00	1	Belt Idler
33	13-0731-00008	1	Flange Locknut 1/2 - 13
34	13-0709-06016	2	Carriage Bolt - 3/8 x 1 - 16
35	13000001383-00	1	Belt Idler Brace
36	13000002868-00	1	Belt Idler Kit

A-FRAME - HD7-33



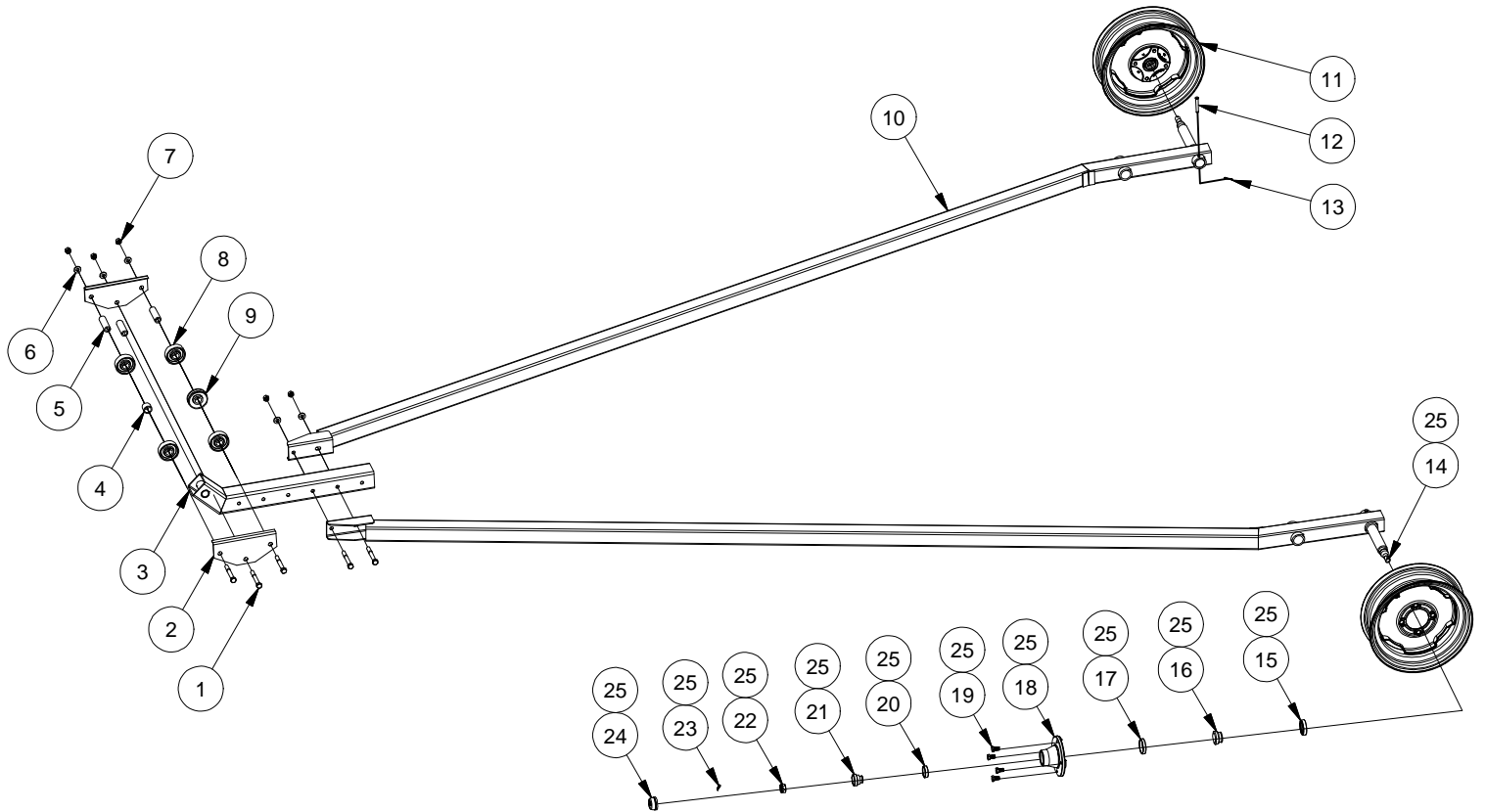
HD7-33			
REF #	PART #	QUANTITY	DESCRIPTION
1	13-0702-08064	5	Hex Cap Screw 1/2 x 4 - 13
2	13000001366-00	2	Trolley Guide
3	13000001363-00	1	Gooseneck Assembly
4	13000001365-00	1	Track Roller Spacer
5	13000001364-00	3	Trolley Bushing
6	13-0734-00008	5	Lock Washer - 1/2"
7	13-0725-00008	5	Hex Nut 1/2 - 13
8	13000001016-00	4	Track Roller
9	13000001017-00	1	Cable Roller - Main Frame Assembly
10	13000002365-00	2	Weldment - Frame A
11	13000001223-00	2	15" Wheel
12	13000001387-00	2	Clevis Pin - 3/8 x 2-3/8"
13	13-0737-04032	2	Cotter Pin - 1/8 x 1"
14	13000001670-00	2	Spindle - 1-1/2 x 13"
15	13000001004-00	2	Grease Seal
16	13000001005-00	2	Tapered Roller Bearing Cone (Outer)
17	13000001006-00	2	Bearing Tapered Roller (Cup)
18	13000001007-00	2	Hub
19	13000001012-00	8	1/2" x 7/8" Wheel Stud
20	13000001008-00	2	Bearing Tapered Roller (Cup)
21	13000001009-00	2	Bearing Tapered Roller Cone - 3/4"
22	13000001010-00	2	Nut UNF hex - 3/4 Inch
23	13-0737-05040	2	Cotter Pin - 5/32 x 1-1/4"
24	13000001011-00	2	Dust Cap
25	13000002553-00	2	Complete Hub c/w Spindle and Bearings

A-FRAME - HD7-39



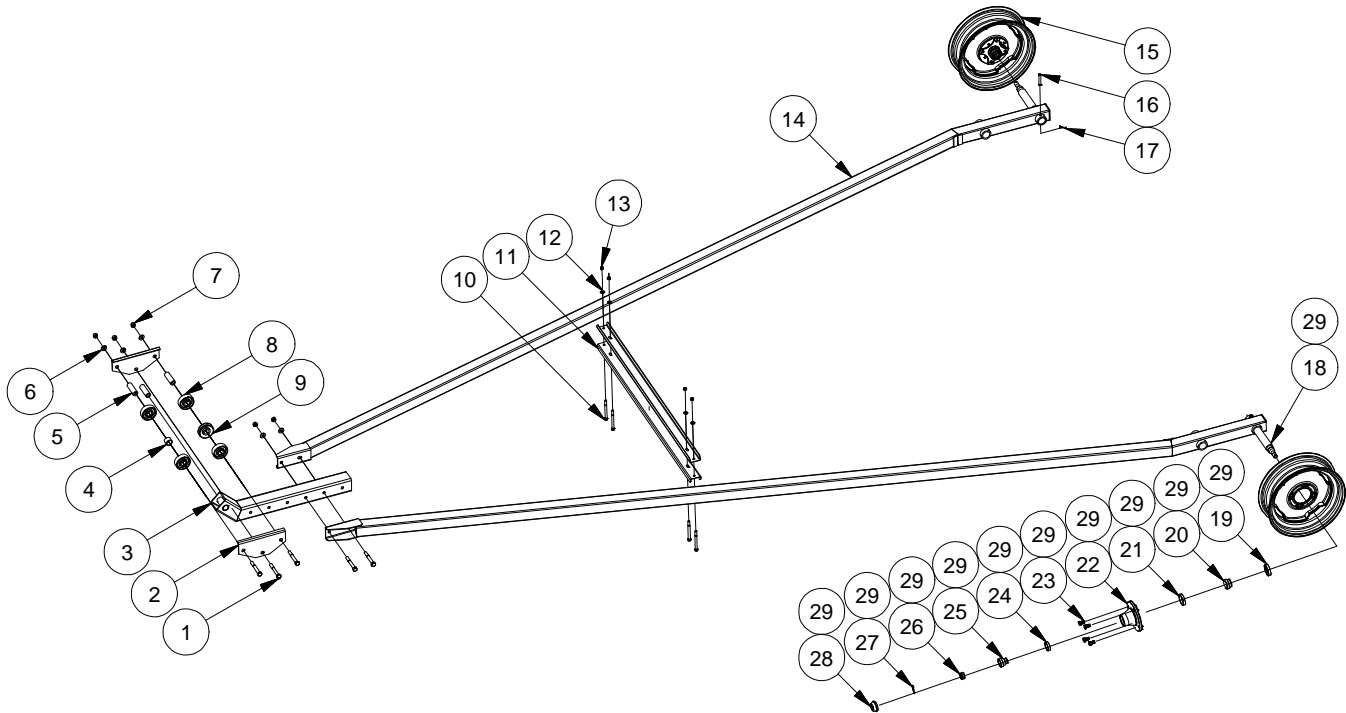
HD7-39			
REF #	PART #	QUANTITY	DESCRIPTION
1	13-0702-08064	5	Hex Cap Screw 1/2 x 4 - 13
2	13000001366-00	2	Trolley Guide
3	13000001363-00	1	Gooseneck Assembly
4	13000001365-00	1	Track Roller Spacer
5	13000001364-00	3	Trolley Bushing
6	13-0734-00008	5	Lock Washer - 1/2"
7	13-0725-00008	5	Hex Nut 1/2 - 13
8	13000001016-00	4	Track Roller
9	13000001017-00	1	Cable Roller - Main Frame Assembly
10	13000002366-00	2	Weldment - Frame A
11	13000001223-00	2	15" Wheel
12	13000001387-00	2	Clevis Pin - 3/8 x 2-3/8"
13	13-0737-04032	2	Cotter Pin - 1/8 x 1"
14	13000001670-00	2	Spindle - 1-1/2 x 13"
15	13000001004-00	2	Grease Seal
16	13000001005-00	2	Tapered Roller Bearing Cone (Outer)
17	13000001006-00	2	Bearing Tapered Roller (Cup)
18	13000001007-00	2	Hub
19	13000001012-00	8	1/2" x 7/8" Wheel Stud
20	13000001008-00	2	Bearing Tapered Roller (Cup)
21	13000001009-00	2	Bearing Tapered Roller Cone - 3/4"
22	13000001010-00	2	Nut UNF Hex - 3/4
23	13-0737-05040	2	Cotter Pin - 5/32 x 1-1/4"
24	13000001011-00	2	Dust Cap
25	13000002553-00	2	Complete Hub c/w Spindle and Bearings

A-FRAME - HD7-46



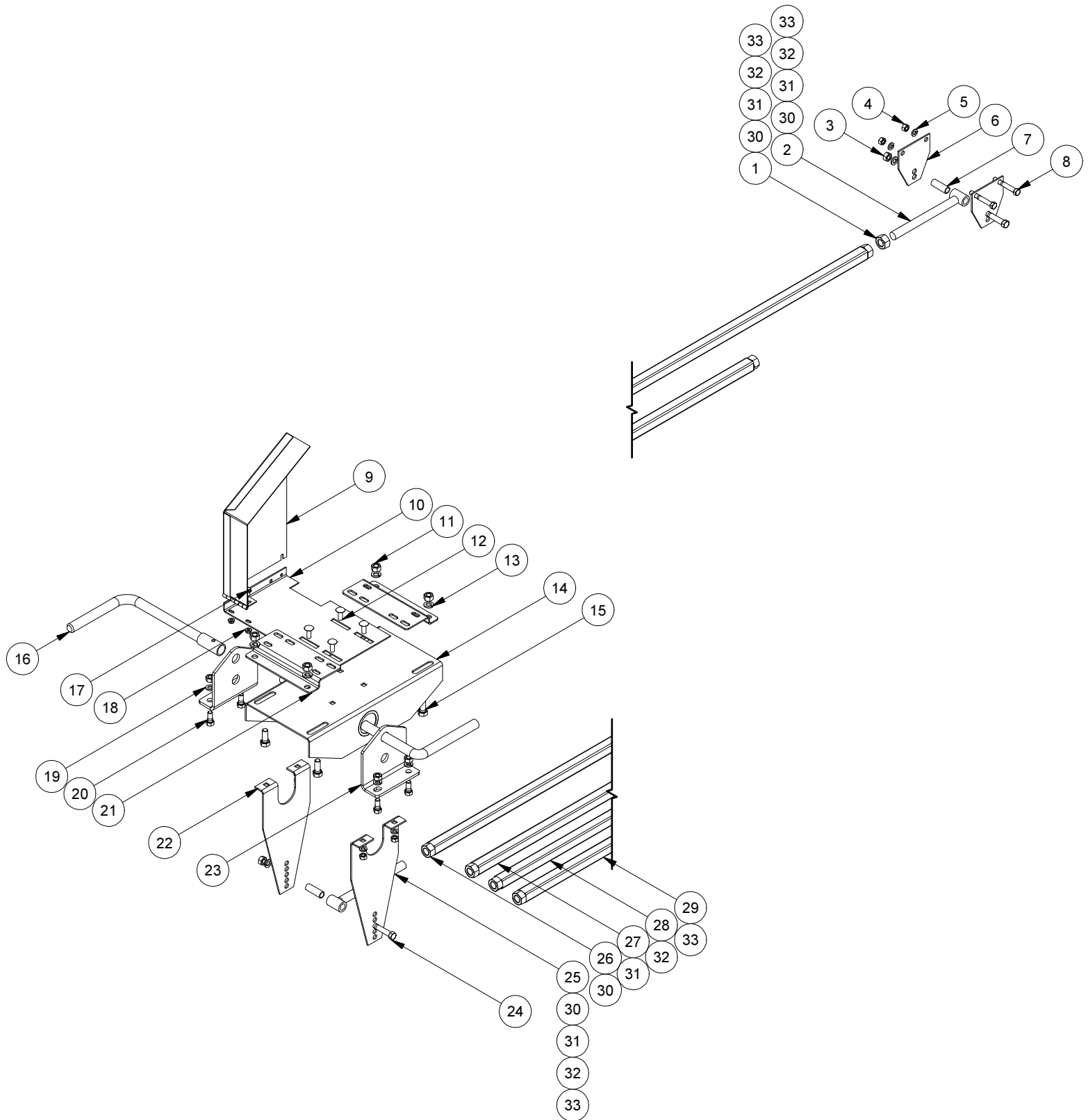
HD7-46			
REF #	PART #	QUANTITY	DESCRIPTION
1	13-0702-08064	5	Hex Cap Screw 1/2 x 4 - 13
2	13000001366-00	2	Trolley Guide
3	13000001363-00	1	Gooseneck Assembly
4	13000001365-00	1	Track Roller Spacer
5	13000001364-00	3	Trolley Bushing
6	13-0734-00008	5	Lock Washer - 1/2"
7	13-0725-00008	5	Hex Nut 1/2 - 13
8	13000001016-00	4	Track Roller
9	13000001017-00	1	Cable Roller - Main Frame Assembly
10	13000002367-00	2	Weldment - Frame A
11	13000001223-00	2	15" Wheel
12	13000001387-00	2	Clevis Pin - 3/8 x 2-3/8"
13	13-0737-04032	2	Cotter Pin - 1/8 x 1"
14	13000001670-00	2	Spindle - 1-1/2 x 13"
15	13000001004-00	2	Grease Seal
16	13000001005-00	2	Tapered Roller Bearing Cone (Outer)
17	13000001006-00	2	Bearing Tapered Roller (Cup)
18	13000001007-00	2	Hub
19	13000001012-00	8	1/2" x 7/8" Wheel Stud
20	13000001008-00	2	Bearing Tapered Roller (Cup)
21	13000001009-00	2	Bearing Tapered Roller (Cone)
22	13000001010-00	2	Nut UNF Hex 3/4
23	13-0737-05040	2	Cotter Pin - 5/32 x 1-1/4"
24	13000001011-00	2	Dust Cap
25	13000002553-00	2	Complete Hub c/w Spindle and Bearings

A-FRAME - HD7-53

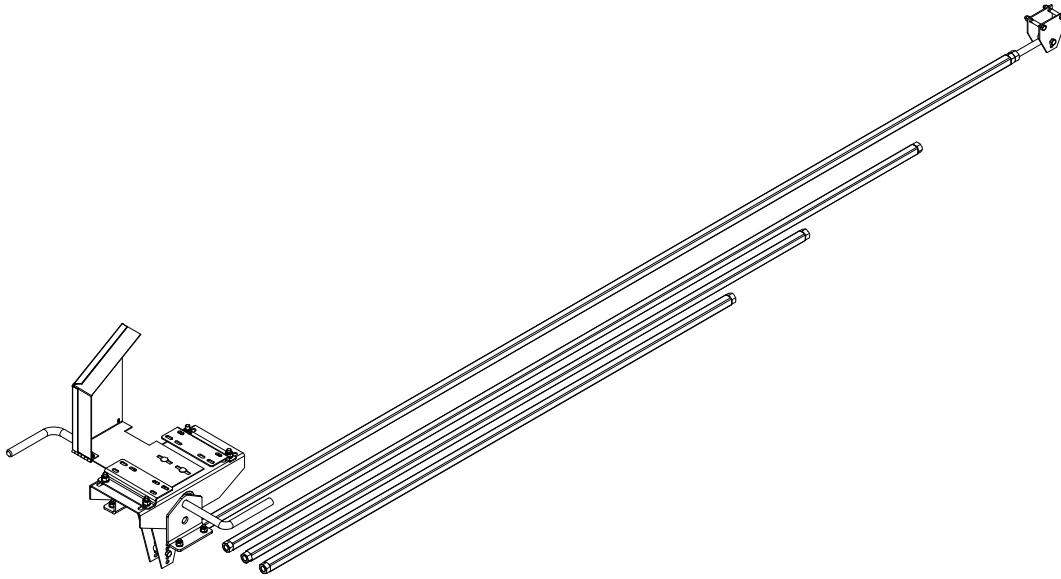


HD7-53			
REF #	PART #	QUANTITY	DESCRIPTION
1	13-0702-08064	5	1/2-13 UNC - 4
2	13000001366-00	2	Trolley Guide
3	13000001363-00	1	Gooseneck
4	13000001365-00	1	Track Roller Spacer
5	13000001364-00	3	Trolley Bushing
6	13-0734-00008	5	Lock Washer - 1/2"
7	13-0725-00008	5	Hex Nuts (Inch Series) Hex Nut
8	13000001016-00	4	Track Roller
9	13000001017-00	1	Cable Roller
10	13-0702-06072	4	3/8-16 UNC - 4.5
11	13000001367-00	2	Cross Brace
12	13-0736-00006	4	Washer INCH
13	13-0725-00006	4	Hex Nuts - 3/8
14	13000002368-00	2	Weldment - Frame A
15	13000001223-00	2	15" Wheel
16	13000001387-00	2	Clevis Pin - 3/8 x 2-3/8"
17	13-0737-04032	2	Cotter Pin - 1/8 x 1"
18	13000001670-00	2	Spindle - 1-1/2 x 13"
19	13000001004-00	2	Grease Seal
20	13000001005-00	2	Tapered Roller Bearing Cone (Outer)
21	13000001006-00	2	Bearing Tapered Roller (Cup)
22	13000001007-00	2	Hub
23	13000001012-00	8	1/2" x 7/8" Wheel Stud
24	13000001008-00	2	Bearing Tapered Roller (Cup)
25	13000001009-00	2	Bearing Tapered Roller Cone - 3/4"
26	13000001010-00	2	3/4" Castlited Nut
27	13-0737-05040	2	Cotter Pin - 5/32 x 1-1/4"
28	13000001011-00	2	Dust Cap
29	13000002553-00	1	Complete Hub c/w Spindle and Bearings

MOTOR MOUNT ASSEMBLY

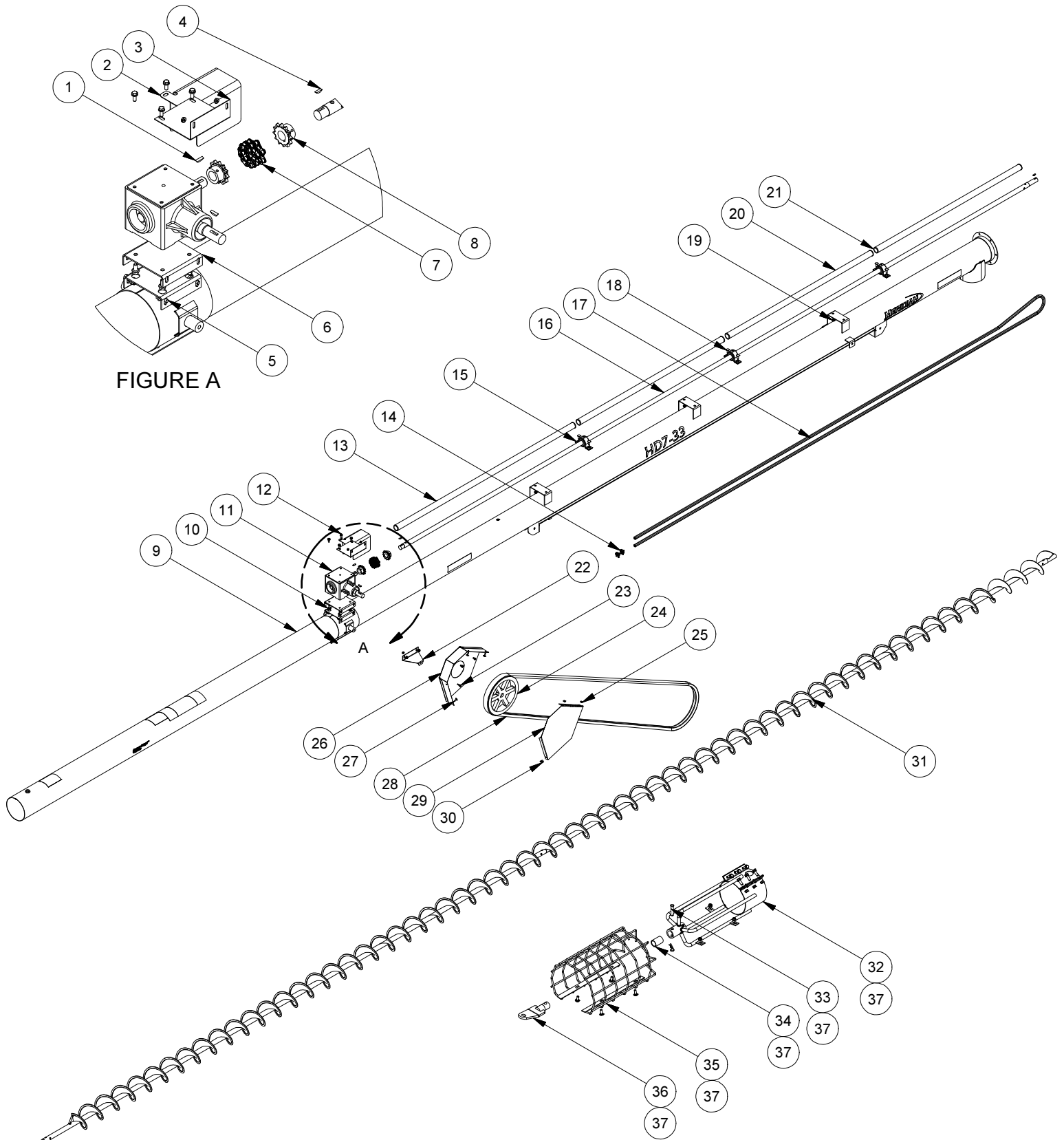


MOTOR MOUNT ASSEMBLY

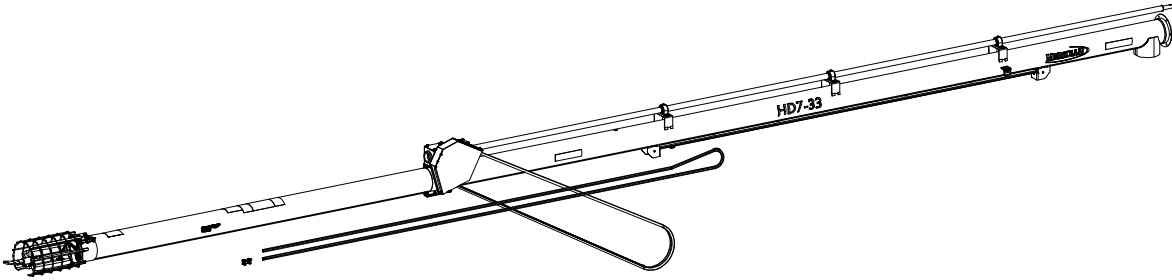


HD7			
REF #	PART #	QUANTITY	DESCRIPTION
1	13-0725-00012	1	Hex Nut - 3/4"-10
2	13000001114-00	1	Upper Leveling Bar
3	13-0725-00007	6	Hex Nut - 7/16"-14
4	13-0725-00006	6	Hex Nut - 3/8"-16
5	13-0734-00006	6	Spring Lock Washer - 3/8"
6	13000001115-00	2	Upper Leveling Bar Bracket
7	13000001106-00	2	Leveling Bar Bushing
8	13-0702-06044	2	Hex Cap Screw - 3/8"-16 x 2.75"
9	13000001929-00	1	Guard Pulley Engine
10	13000001949-00	1	Pulley Guard Base
11	13-0725-00008	4	Hex Nut - 1/2"-13
12	13-0709-06016	4	Carriage Bolt - 3/8"-16 x 1"
13	13-0734-00008	4	Spring Lock Washer - 1/2"
14	13000001100-00	1	Weldment - Mount Motor
15	13-0702-08020	4	Hex Cap Screw - 1/2"-13 x 1.25"
16	13000002964-00	1	Extension Handle
17	13-0712-04008	2	Flange Lock Bolt - 1/4"-20 x 0.5"
18	13-0731-00004	2	Flange Lock Nut - 1/4"-20
19	13-0734-00007	6	Spring Lock Washer - 7/16"
20	13-0702-07016	4	Hex Cap Screw - 7/16"-14 x 1"
21	13000001105-00	2	Motor Mount Bracket
22	13000001101-00	2	Lower Leveling Bar Bracket
23	13000001449-00	2	Pivot Bracket
24	13-0702-07048	2	Hex Cap Screw - 7/16"-14 x 3"
25	13000001107-00	1	Screw Leveling Bar Adjustable - LH
26	13000001452-00	1	Leveling Bar - 53
27	13000001451-00	1	Leveling Bar - 46
28	13000001450-00	1	Leveling Bar - 39
29	13000002439-00	1	Leveling Bar - 33
30	13160016000	1	Leveling Bar Assembly - 53
31	13140014000	1	Leveling Bar Assembly - 46
32	13120012001	1	Leveling Bar Assembly - 39
33	13100010000	1	Leveling Bar Assembly - 33

TUBE ASSEMBLY - HD7-33

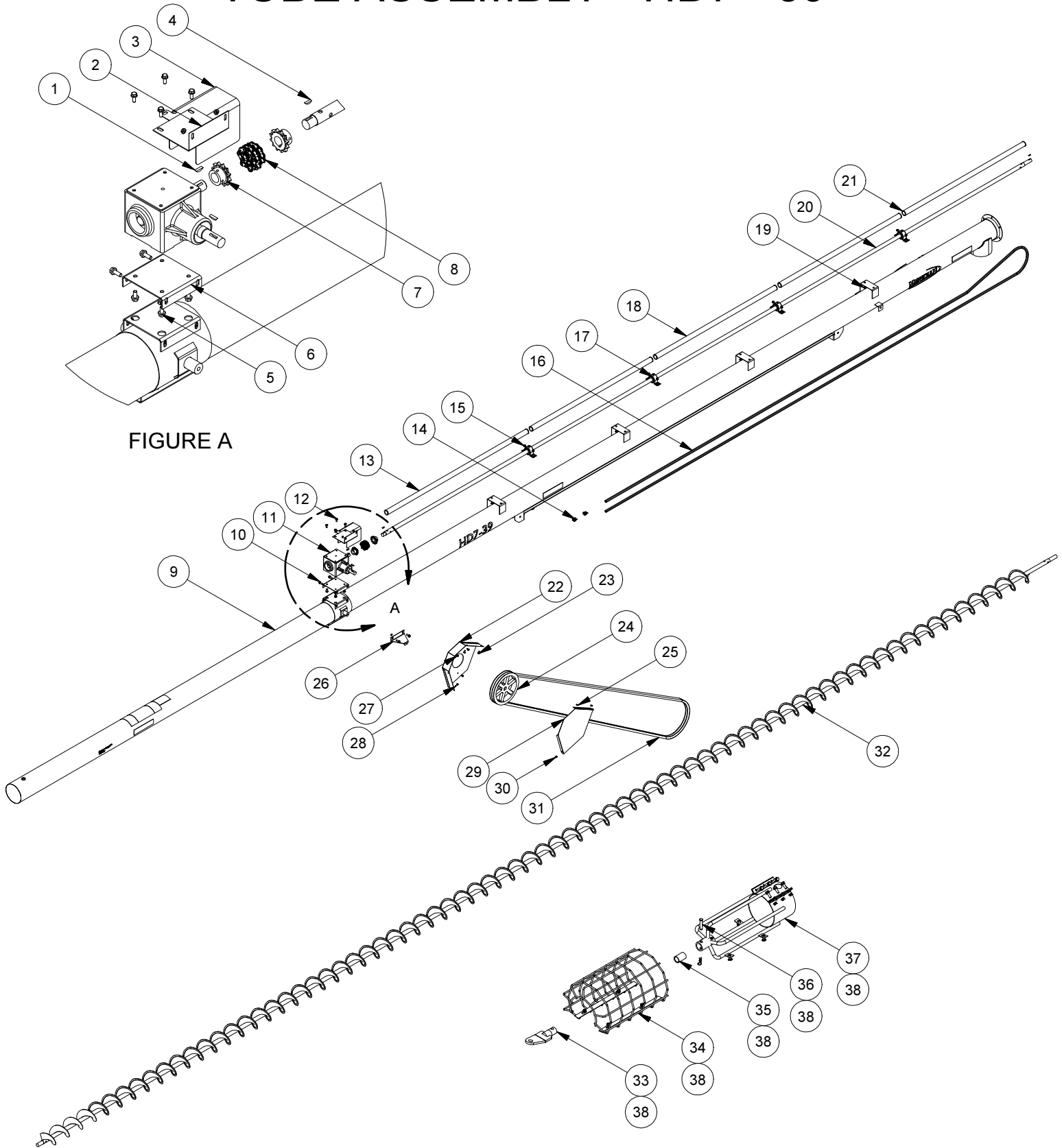


TUBE ASSEMBLY - HD7-33

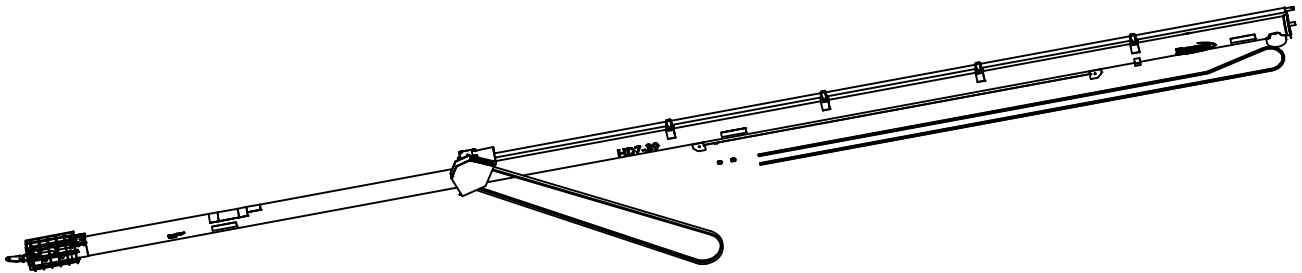


HD7-33			
REF #	PART #	QUANTITY	DESCRIPTION
1	13-0740-00808	2	Woodruff Key, 1/4" x 1"
2	13000001335-00	1	Guard Gear Box Shaft
3	13000002443-00	1	Upper Pulley Bracket
4	13-0740-00807	2	Woodruff Key, 1/4" x 7/8"
5	13-0712-06016	10	Flange Lock Bolt 3/8 x 1 - 16
6	13000001428-00	1	Gear Box Mount
7	13000001045-00	1	Coupler Chain
8	13000001044-00	2	Coupler Sprocket
9	13000002376-00	1	Tube
10	13-0712-06012	4	Flange Lock Bolt 3/8 x 3/4 - 16
11	13000001242-00	1	Gear Box
12	13-0712-05012	4	Flange Lock Bolt 5/16 x 3/4 - 18
13	13000002390-00	1	Drive Guard Shaft - Bottom
14	13000001060-00	2	1/4" Galv. Cable Clamp
15	13000001180-00	3	Split Pillow Block Bearing
16	13000002383-00	1	Drive Shaft
17	13000002442-00	1	Lift Cable
18	13-0709-06016	10	Carriage Bolt 3/8 x 1 - 16
19	13-0731-00006	20	Flange Lock Nut - 3/8-16
20	13000002388-00	3	Drive Shaft - Guard - Top Section
21	13000002339-00	8	Drive Shaft Guard Bushing
22	13000002444-00	1	Lower Pulley Bracket
23	13-0712-04008	3	Flange Lock Bolt 1/4 x 1/2 - 20
24	13000001132-00	1	Double Groove Sheave
25	13-0731-00004	5	Flange Lock Nut 1/4 - 20
26	13000001339-00	1	PTO Guard - Back
27	13-0709-04012	3	Carriage Bolt 1/4 x 3/4 - 20
28	13000001071-02	1	Belt - B-195 Banded Double
29	13000001340-00	1	Pulley Guard Cover
30	13-0732-00004	1	Wing Nut
31	13000002379-00	1	Flight
32	13000001280-00	1	Fork
33	13000001220-00	1	Clevis Pin 1/2 x 2-1/2
34	13000001284-00	1	Bronze Bushing
35	13000001282-00	1	Fork Guard
36	13000001219-00	1	Hitch Assembly
37	13000001121-00	1	Intake Fork Complete

TUBE ASSEMBLY - HD7 - 39

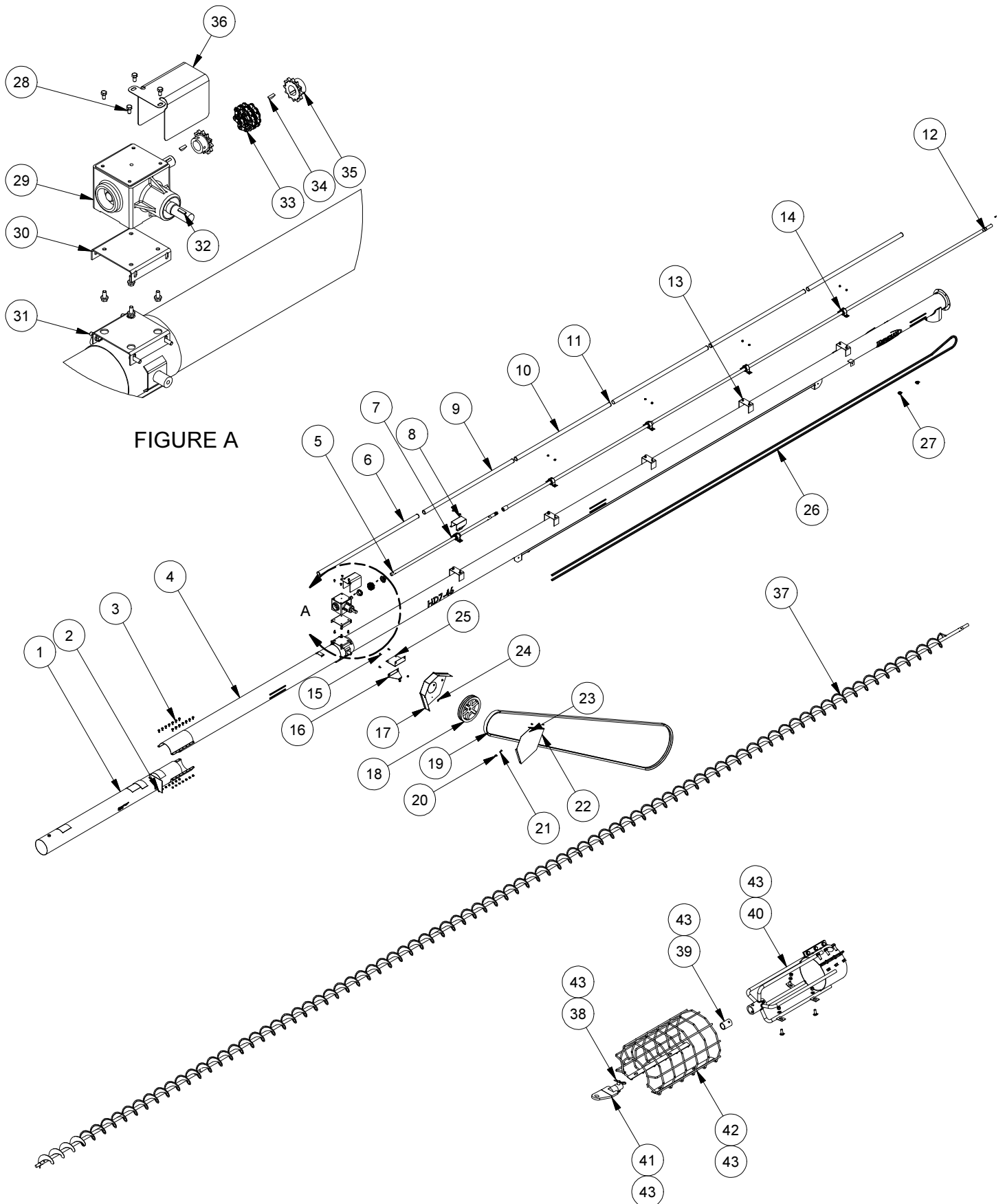


TUBE ASSEMBLY - HD7 - 39

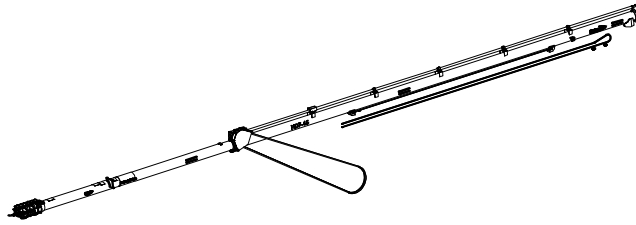


HD7-39			
REF #	PART #	QUANTITY	DESCRIPTION
1	13-0740-00808	2	Woodruff Key, 1/4" x 1"
2	13000002443-00	1	Upper Pulley Bracket
3	13000001335-00	1	Guard Gear Box Shaft
4	13-0740-00807	2	Woodruff Key, 1/4" x 7/8"
5	13-0712-06012	4	Flange Lock Bolt 3/8-16 x 3/4
6	13000001428-00	1	Gear Box Mount
7	13000001044-00	2	Coupler Sprocket
8	13000001045-00	1	Coupler Chain
9	13000003604-00	1	Tube
10	13-0712-06016	4	Flange Lock Bolt 3/8-16 x 1
11	13000001242-00	1	Gear Box
12	13-0712-05012	4	Flange Lock Bolt 5/16-18 x 0.75
13	13000002391-00	1	Drive Shaft Guard - Bottom Section
14	13000001060-00	2	1/4" Galv. Cable Clamp
15	13-07310-0006	16	Flange Lock Nut 3/8-16
16	13000001423-00	1	Lift Cable
17	13000001180-00	4	Split Pillow Block Bearing
18	13000002388-00	4	Drive Shaft - Guard - Top Section
19	13-0709-06016	12	Carriage Bolt 3/8-16 x 1
20	13000002384-00	1	Drive Shaft Assembly
21	13000002339-00	10	Drive Shaft Guard Bushing
22	13000001339-00	1	PTO Guard - Back
23	13-0709-04012	2	Carriage Bolt 1/4-20 x 3/4
24	13000001132-00	1	Double Groove Sheave
25	13073100004	5	Flange Lock Nut 1/4-20
26	13000002444-00	1	Lower Pulley Bracket
27	13-0712-04008	3	Flange Lock Bolt 1/4-20 x 1/2
28	13-0712-04012	1	Flange Lock Bolt 1/4-20 x 3/4
29	13000001340-00	1	Pulley Guard Cover
30	13-0732-00004	1	Wing Nut
31	13000001072-02	1	Belt - B-225 Banded Double
32	13000003605-00	1	Flight
33	13000001219-00	1	Hitch Assembly
34	13000001282-00	1	Fork Guard
35	13000001284-00	1	Bronze Bushing
36	13000001220-00	1	Clevis Pin & Hair Pin, 1/2" Dia. x 2-1/2" Long, Hair Pin=1/8"
37	13000001280-00	1	Fork
38	13000001121-00	1	Intake Fork Assembly

TUBE ASSEMBLY - HD7-46

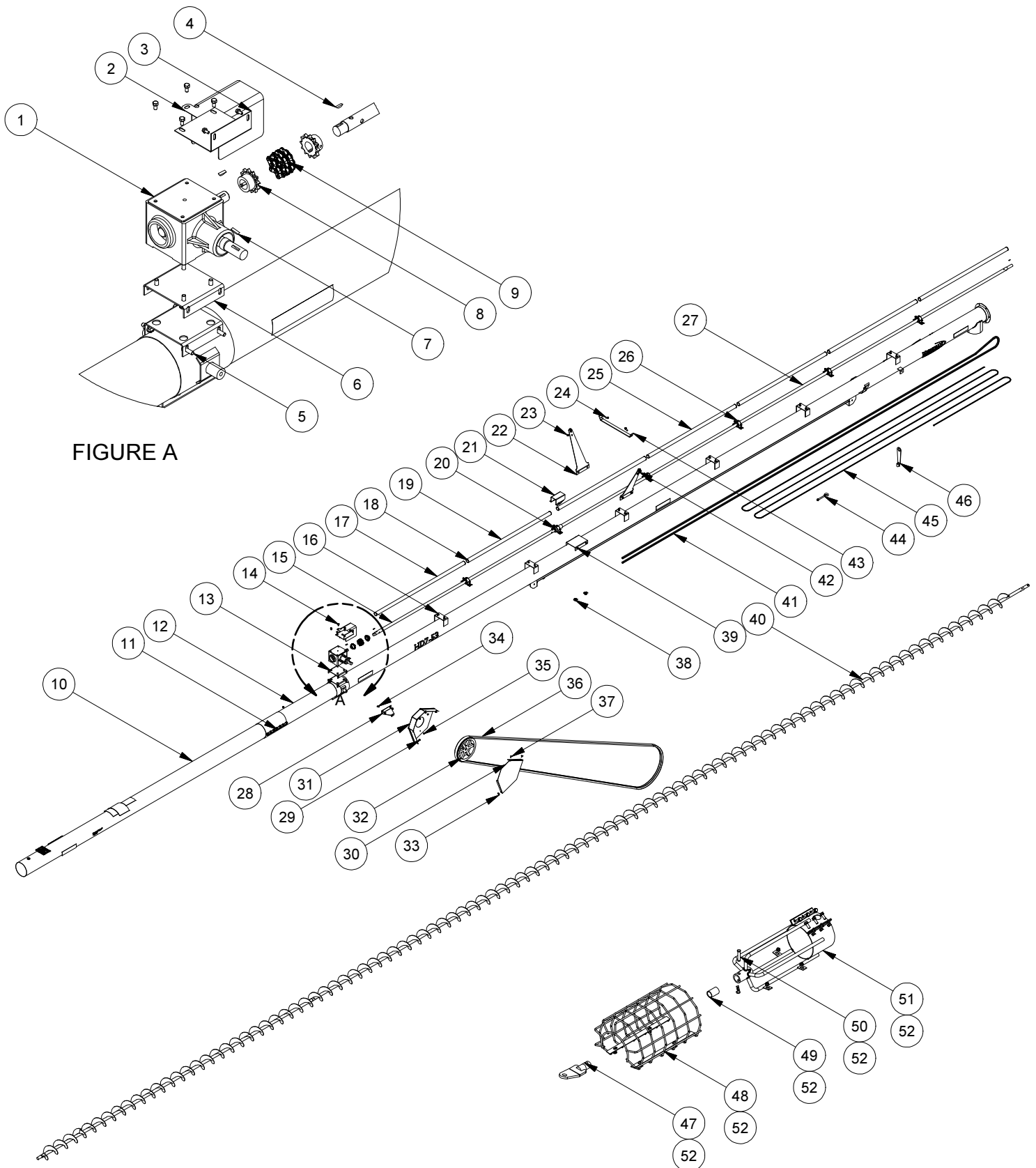


TUBE ASSEMBLY - HD7-46



HD7-46			
REF #	PART #	QUANTITY	DESCRIPTION
1	13000003608-00	1	Tube
2	13-0731-00006	34	Flange Lock Nut 3/8 - 16
3	13-0712-06012	18	Flange Lock Bolt 3/8 x 3/4 - 16
4	13000003607-00	1	Tube Top
5	13000002386-00	1	Bottom Drive Shaft Assembly
6	13000002392-00	1	Drive Shaft Guard - Bottom Section
7	13000001904-00	1	Bearing c/w Housing
8	13000001931-00	1	Drive Shaft Guard
9	13000002389-00	1	Drive Shaft Guard - Middle Section
10	13000002388-00	4	Drive Shaft Guard - Top Section
11	13000002339-00	12	Drive Shaft Guard Bushing
12	13000002385-00	1	Drive Shaft Assembly
13	13-0709-06016	14	Carriage Bolt 3/8 x 1 - 16
14	13000001180-00	4	Pillow Block Bearing
15	13-0712-04008	3	Flange Lock Bolt 1/4 x 1/2 - 20
16	13000002444-00	1	Lower Pulley Bracket
17	13000001339-00	1	PTO Guard - Back
18	13000001132-00	1	Double Groove Sheave
19	13000001133-02	1	Belt - B-270 Banded Double
20	13-0732-00004	1	1/4-20 UNC Wing Nut
21	13-0712-04012	1	Flange Lock Bolt 1/4 x 3/4 - 20
22	13000001340-00	1	Pulley Guard Cover
23	13-0709-04012	2	Carriage Bolt 1/4 x 3/4 - 20
24	13-0731-00004	5	Flange Lock Nut 1/4 - 20
25	13000002443-00	1	Upper Pulley Bracket
26	13000001424-00	1	Lift Cable
27	13000001060-00	2	1/4" Galv. Cable Clamp
28	13-0702-05010	4	Hex Cap Screw 5/16 x 5/5 - 18
29	13000001242-00	1	Gear Box
30	13000001428-00	1	Gear Box Mount
31	13-0712-06016	14	Flange Lock Bolt 3/8 x 1 -16
32	13-0740-00808	1	Woodruff Key 1/4 X 1
33	13000001045-00	1	Coupler Chain
34	13-0740-00807	3	Woodruff Key 1/4 x 7/8
35	13000001044-00	2	Coupler Sprocket
36	13000001335-00	1	Guard Gear Box Shaft
37	13000003609-00	1	Flight Assembly
38	13000001220-00	1	Hitch Pin and Clip
39	13000001284-00	1	Intake Fork Bushing
40	13000001280-00	1	Intake Fork
41	13000001219-00	1	Auger Hitch
42	13000001282-00	1	Intake Guard
43	13000001121-00	1	Fork End Assembly

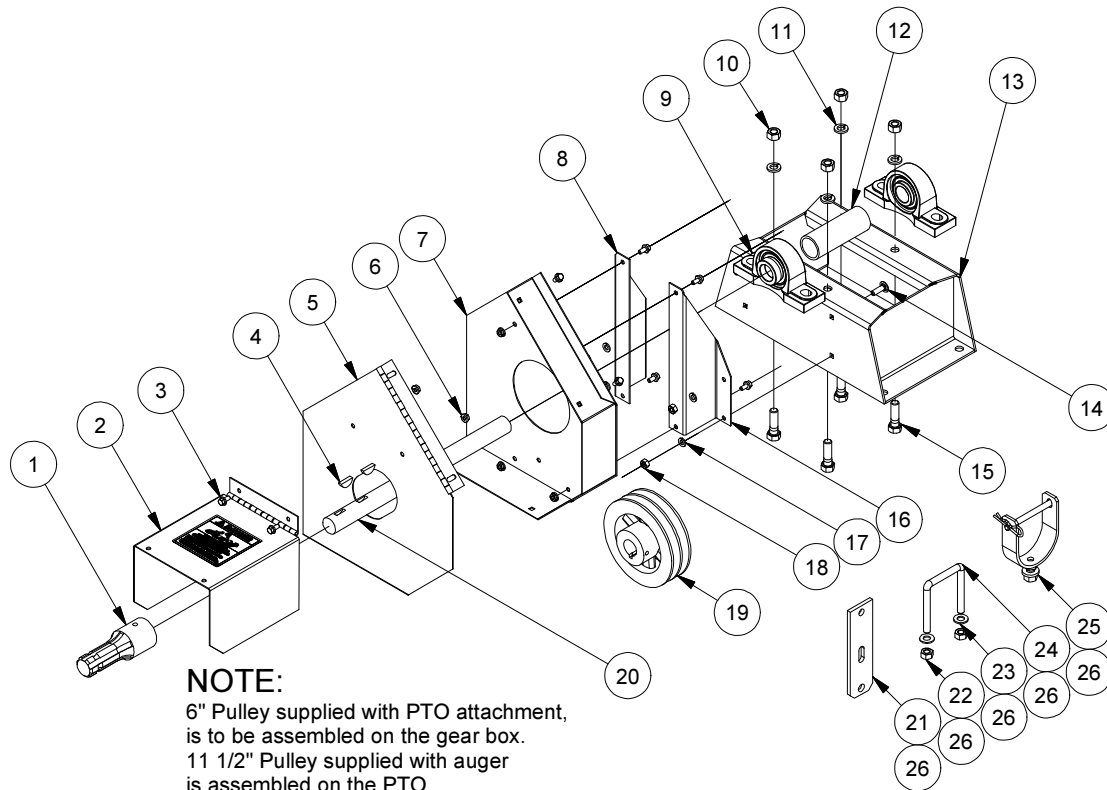
TUBE ASSEMBLY - HD7-53



TUBE ASSEMBLY - HD7-53

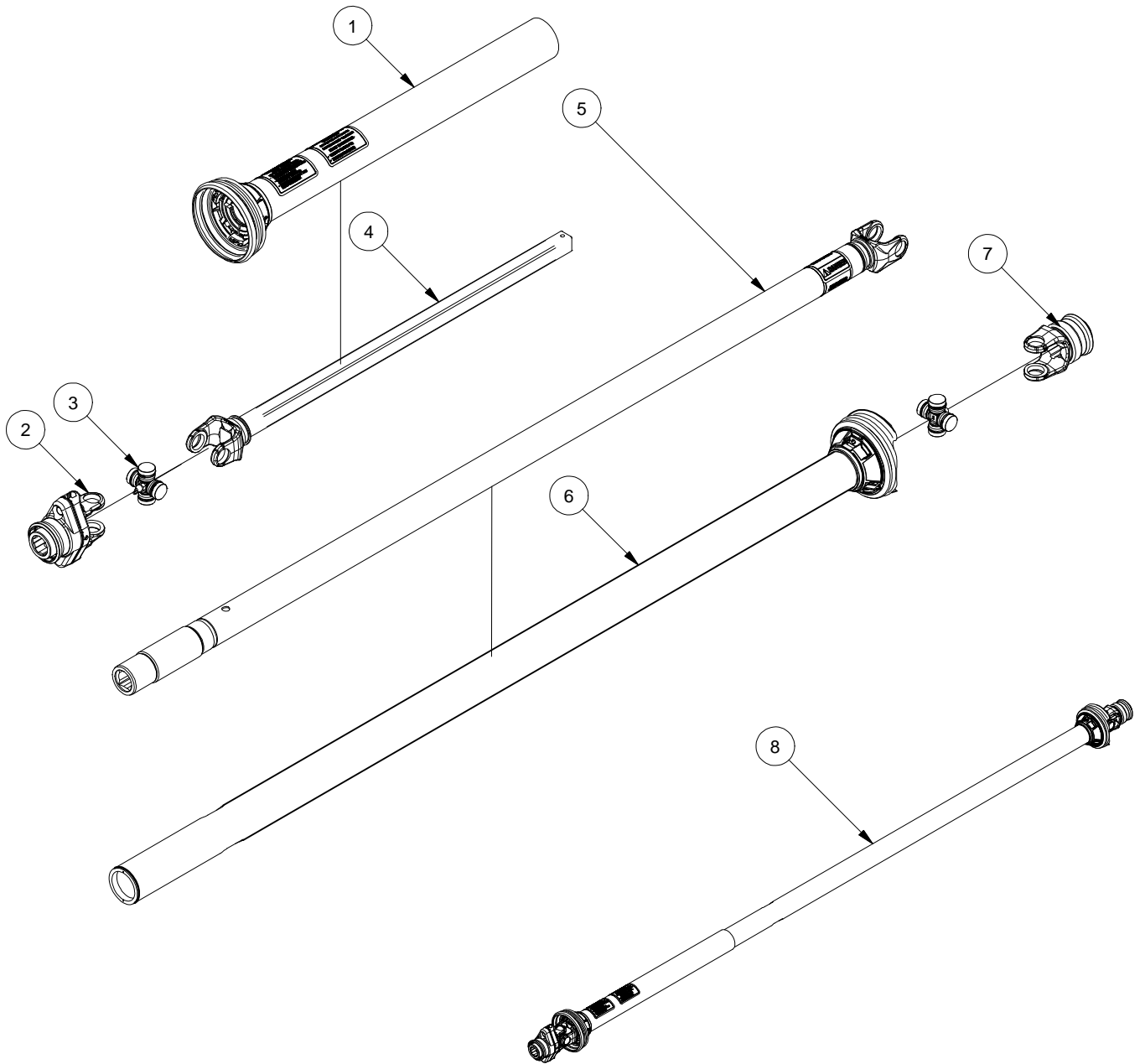
HD7-53			
REF #	PART #	QUANTITY	DESCRIPTION
1	13000001242-00	1	Gear Box
2	13000001335-00	1	Guard Gear Box Shaft
3	13000002443-00	1	Upper Pulley Bracket
4	13-0740-00807	2	Woodruff Key, 1/4" x 7/8"
5	13-0712-06016	4	Flange Lock Bolt 3/8 x 1 -16
6	13000001428-00	1	Gear Box Mount
7	13-0740-00808	2	Woodruff Key, 1/4" x 1"
8	13000001044-00	2	Coupler Sprocket
9	13000001045-00	1	Coupler Chain
10	13000003615-00	1	Tube Bottom
11	13-0731-00006	38	Flange Lock Nut 3/8 - 16
12	13000003614-00	1	Tube Top
13	13-0712-06012	18	Flange Lock Nut 3/8 x 3/4 - 16
14	13-0702-05010	4	Hex Cap Screw 5/16 x 5/8 - 18
15	13000002387-00	1	Bottom Drive Shaft
16	13-0709-06016	16	Carriage Bolt - 3/8 x 1 - 16
17	13000002393-00	1	Drive Shaft Guard (Bottom Section)
18	13000002339-00	14	Drive Shaft Guard Bushing
19	13000002389-00	1	Drive Shaft Guard (Middle Section)
20	13000001904-00	1	Bearing c/w Housing
21	13000001931-00	1	Drive Shaft Guard
22	13000001443-00	2	Truss Riser
23	13-0725-00007	2	7/16" Hex Nut
24	13-0702-07020	2	Hex Cap Screw 7/16 x 1-1/4 - 14
25	13000002388-00	5	Drive Shaft - Guard - Top Section
26	13000001180-00	5	Split Pillow Block Bearing
27	13000002385-00	1	Drive Shaft
28	13000002444-00	1	Lower Pulley Bracket
29	13-0712-04012	1	Flange Lock Bolt 1/4 x 3/4 - 20
30	13000001340-00	1	Pulley Guard Cover
31	13000001339-00	1	PTO Guard - Back
32	13000001132-00	1	Double Groove Sheave
33	13-0732-00004	1	Wing Nut
34	13-0712-04008	3	Flange Lock Bolt 1/4 x 1/2 - 20
35	13-0731-00004	5	Flange Lock Nut 1/4 - 20
36	13000001432-02	1	Belt - B-310 Banded Double
37	13-0709-04012	2	Carriage Bolt 1/4 x 3/4 - 20
38	13000001060-00	2	1/4" Galv. Cable Clamp
39	13-0709-06012	4	Carriage Bolt 3/8 x 3/4 - 16
40	13000003616-00	1	Flight
41	13000001424-00	1	Lift Cable
42	13000002433-00	2	Cable Clamp - 5/16"
43	13000003100-00	1	Truss Brace
44	13000001447-00	1	1/2" x 6" Eye Bolt
45	13000001445-00	1	Truss/Lift Cable
46	13000001435-00	1	Truss Cable Anchor
47	13000001219-00	1	Hitch Assembly
48	13000001282-00	1	Fork Guard
49	13000001284-00	1	Bronze Bushing
50	13000001220-00	1	Clevis Pin & Hair Pin, 1/2" Dia. x 2-1/2" Long, Hair Pin=1/8"
51	13000001280-00	1	Fork
52	13000001121-00	1	Intake Fork Complete

PTO ATTACHMENT



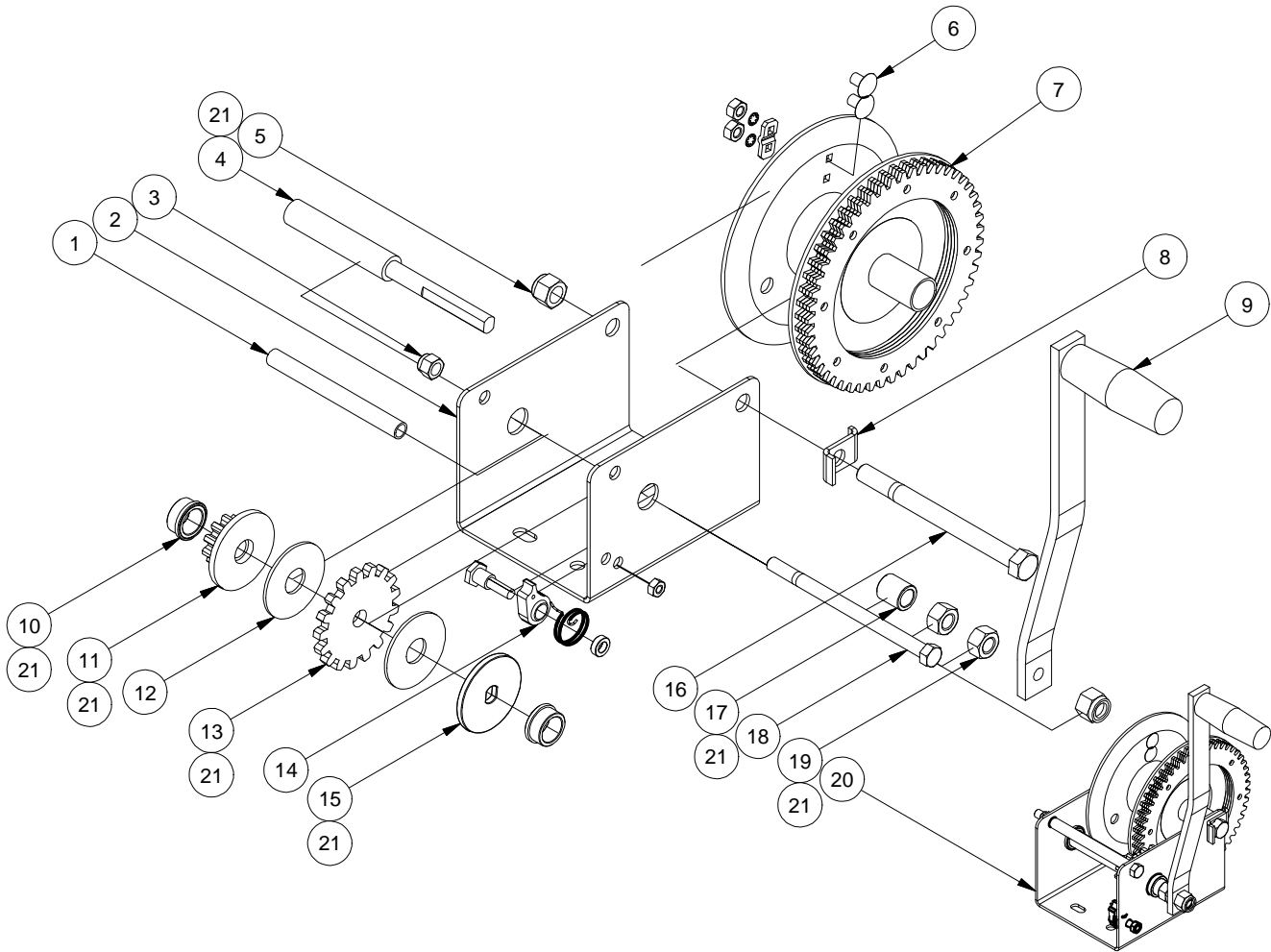
HD7			
REF #	PART #	QUANTITY	DESCRIPTION
1	13000001264-00	1	PTO Splined Hub
2	13000001349-00	1	P.T.O. Guard
3	13-0712-04008	8	Flange Lock Bolt 1/4 x 1/2 - 20
4	13-0740-00808	2	Woodruff Key
5	13000001348-00	1	P.T.O. Guard Cover
6	13-0731-00004	8	Flange Lock Nut 1/4 - 20
7	13000001339-00	1	PTO Guard - Back
8	13000001460-00	1	Mounting Bracket - Pulley Guard - LH
9	13000001141-00	2	Bearing Pillow c/w Housing, 1-1/8" ID
10	13-0725-00008	4	Hex Nut 1/2 - 13
11	13-0734-00008	4	1/2" Lock Washer
12	13000001263-00	1	P.T.O. Drive Shaft Guard
13	13000001140-00	1	PTO Attachment Base
14	13-0709-05016	4	Carriage Bolt 5/16 x 1 - 18
15	13-0702-08028	4	Hex Cap Screw 1/2 x 1-3/4 - 13
16	13000001462-00	1	Mounting Bracket - Pulley Guard - RH
17	13-0734-00005	4	5/16 Lock Washer
18	13-0725-00005	4	Hex Nut 5/16 - 18
19	13000002503-00	1	Double Groove V-Pulley - 6"
20	13000001142-00	1	PTO Shaft
21	13000002619-00	1	PTO Shaft Holder Base
22	13-0725-00007	2	Hex Nut 7/16 - 14
23	13-0734-00007	2	Spring Lock Washer 7/16
24	13000003143-00	1	U-Bolt 7/16 x 2.5 ID x 4 Long
25	13000002618-00	1	PTO Bracket Holder
26	13000002870-00	1	PTO Bracket Kit

PTO SHAFT



HD7			
REF #	PART #	QUANTITY	DESCRIPTION
1	13000001999-00	1	Outer PTO Shield
2	13000001987-00	1	PTO Ball Shear Assembly
3	13000001274-00	2	Cross & Bearing Kit
4	13000001996-00	1	Yoke & Male Shaft
5	13000002003-00	1	Yoke & Female Tube
6	13000002001-00	1	Inner PTO Shield
7	13000002004-00	1	Quick Disconnect Yoke
8	13000002036-00	-	Complete PTO Shaft

FULTON K1550 BRAKE WINCH



HD7			
REF #	PART #	QUANTITY	DESCRIPTION
1	N/A	1	Frame Spacer (Not Available to Order)
2	N/A	1	Frame (Not Available to Order)
3	13-0729-00006	1	Nylon Locknut 3/8 - 16
4	13000001936-00	1	Input Shaft
5	13-0729-00008	2	Nylon Locknut 1/2 - 13
6	13000001672-00	1	Cable Clamp
7	13000001935-00	1	Drum Assembly
8	N/A	1	Keeper (Not Available to Order)
9	13000001711-00	1	Handle
10	13000001937-00	2	Bushing
11	13000001947-00	1	Pinion & Disc
12	13000001677-00	2	Brake Pads
13	13000001932-00	1	Ratchet Gear
14	13000001712-00	1	Pawl and Spring Kit
15	13000001933-00	1	Shaft Brake Disc
16	13-0702-08096	1	Hex Cap Screw - 1/2 x 6 - 13
17	13000001934-00	1	Spacer
18	13-0702-06096	1	Hex Cap Screw - 3/8 x 6 - 16
19	13-0724-00008	2	Hex Nut 1/2 - 13
20	13000001671-00	1	Fulton 1550 Winch Complete
21	13000002541-00	-	K1550 Winch Repair Kit - Includes Items 4,10,11,13,15,17,19

GENERAL PARTS

ITEM	DESCRIPTION
13000002949-00	Red Spray Paint
13000002950-00	Grey Spray Paint
13000002857-00	7" Cupped Repair Flight w/ Shaft and Stub - 1 1/4" Shaft
13000002593-00	7" Regular Flight / Foot - 1 1/4" OD Shaft
13000002592-00	7" Cupped Flight / 2 Feet - 1 1/4" OD Shaft
13000002588-00	7" Flight Shaft Core / Foot - 1 1/4" OD
13000002379-02	7" Flight Shaft Stub - Fork - 1 1/4" OD Shaft
13000002379-05	7" Flight Shaft Stub - Joiner - 1 1/4" OD Shaft
13000002379-06	7" Flight Shaft Stub - Head - 1 1/4" OD Shaft
13000003864-00	7" Helix - Cup / Foot
13000002387-01	7" Coupler Stub
13000002385-02	7" Splined Coupling
13000002387-03	7" Splined Shaft
13000001135-00	7" Tubing / Foot
13000001122-08	7" Angle Flange
13000003689-00	Decal - HD7-33
13000003690-00	Decal - HD7-39
13000003691-00	Decal - HD7-46
13000003692-00	Decal - HD7-53
13000003685-00	Decal - Meridian
13000001653-00	Decal - Caution (Large)
13000001654-00	Decal - Warning
13000001655-00	Decal - Danger - Upending Hazard
13000001656-00	Decal - Danger - Electrocution Hazard
13000001657-00	Decal - Danger - Rotating Flighting
13000001658-00	Decal - Warning - Mover Part Hazard
13000001659-00	Decal - Caution (Small)
13000001660-00	Decal - Rotating Drive Line
13000002901-00	Reflector Yellow
13000002900-00	Reflector Red
13000004969-00	Kit - Bolt On Repair Kit 7in
13000004785-00	Decal - Super Edge Flighting

INDEX

Part #	Page	Ref #	Part #	Page	Ref #	Part #	Page	Ref #
13100010000	E14	33	13000001017-00	E8	24	13000001132-00	E20	18
13120012001	E14	32	13000001017-00	E9	9	13000001132-00	E22	32
13140014000	E14	31	13000001017-00	E10	9	13000001133-02	E20	19
13160016000	E14	30	13000001017-00	E11	9	13000001135-00	E26	N/A
13000001004-00	E9	15	13000001017-00	E12	9	13000001140-00	E23	13
13000001004-00	E10	15	13000001044-00	E16	8	13000001141-00	E23	9
13000001004-00	E11	15	13000001044-00	E18	7	13000001142-00	E23	20
13000001004-00	E12	19	13000001044-00	E20	35	13000001180-00	E16	15
13000001005-00	E9	16	13000001044-00	E22	8	13000001180-00	E18	17
13000001005-00	E10	16	13000001045-00	E16	7	13000001180-00	E20	14
13000001005-00	E11	16	13000001045-00	E18	8	13000001180-00	E22	26
13000001005-00	E12	20	13000001045-00	E20	33	13000001206-00	E2	20
13000001006-00	E9	17	13000001045-00	E22	9	13000001219-00	E16	36
13000001006-00	E10	17	13000001060-00	E16	14	13000001219-00	E18	33
13000001006-00	E11	17	13000001060-00	E18	14	13000001219-00	E20	41
13000001006-00	E12	21	13000001060-00	E20	27	13000001219-00	E22	47
13000001007-00	E9	18	13000001060-00	E22	38	13000001220-00	E16	33
13000001007-00	E10	18	13000001071-02	E16	28	13000001220-00	E18	36
13000001007-00	E11	18	13000001072-02	E18	31	13000001220-00	E20	38
13000001007-00	E12	22	13000001080-00	E1	9	13000001220-00	E22	50
13000001008-00	E9	20	13000001083-00	E2	5	13000001223-00	E9	11
13000001008-00	E10	20	13000001084-00	E2	3	13000001223-00	E10	11
13000001008-00	E11	20	13000001085-00	E2	2	13000001223-00	E11	11
13000001008-00	E12	24	13000001086-00	E2	1	13000001223-00	E12	15
13000001009-00	E9	21	13000001087-00	E2	6	13000001240-00	E2	18
13000001009-00	E10	21	13000001088-00	E2	10	13000001242-00	E2	21
13000001009-00	E11	21	13000001089-00	E2	11	13000001242-00	E16	11
13000001009-00	E12	25	13000001090-00	E2	16	13000001242-00	E18	11
13000001010-00	E9	22	13000001092-00	E2	14	13000001242-00	E20	29
13000001010-00	E10	22	13000001093-00	E2	9	13000001242-00	E22	1
13000001010-00	E11	22	13000001094-00	E2	15	13000001263-00	E23	12
13000001010-00	E12	26	13000001095-00	E2	13	13000001264-00	E23	1
13000001011-00	E9	24	13000001100-00	E14	14	13000001274-00	E24	3
13000001011-00	E11	24	13000001101-00	E14	22	13000001280-00	E16	32
13000001011-00	E12	28	13000001105-00	E14	21	13000001280-00	E18	37
13000001011-11	E10	24	13000001106-00	E14	7	13000001280-00	E20	40
13000001012-00	E9	19	13000001107-00	E14	25	13000001280-00	E22	51
13000001012-00	E10	19	13000001114-00	E14	2	13000001282-00	E16	35
13000001012-00	E11	19	13000001115-00	E14	6	13000001282-00	E18	34
13000001012-00	E12	23	13000001121-00	E16	37	13000001282-00	E20	42
13000001016-00	E9	8	13000001121-00	E18	38	13000001282-00	E22	48
13000001016-00	E10	8	13000001121-00	E20	43	13000001284-00	E16	34
13000001016-00	E11	8	13000001121-00	E22	52	13000001284-00	E18	35
13000001016-00	E12	8	13000001122-00	E26	N/A	13000001284-00	E20	39
13000001017-00	E4	23	13000001132-00	E16	24	13000001284-00	E22	49
13000001017-00	E6	24	13000001132-00	E18	24	13000001335-00	E16	2

INDEX

Part #	Page	Ref #	Part #	Page	Ref #	Part #	Page	Ref #
13000001335-00	E18	3	13000001428-00	E22	6	13000001924-00	E8	16
13000001335-00	E20	36	13000001432-02	E22	36	13000001926-00	E3	13
13000001335-00	E22	2	13000001435-00	E22	46	13000001926-00	E4	17
13000001339-00	E16	26	13000001443-00	E22	22	13000001926-00	E6	10
13000001339-00	E18	22	13000001445-00	E22	45	13000001926-00	E8	9
13000001339-00	E20	17	13000001447-00	E22	44	13000001929-00	E14	9
13000001339-00	E22	31	13000001449-00	E14	23	13000001931-00	E20	8
13000001339-00	E23	7	13000001450-00	E14	28	13000001931-00	E22	21
13000001340-00	E16	29	13000001451-00	E14	27	13000001932-00	E25	13
13000001340-00	E18	29	13000001452-00	E14	26	13000001933-00	E25	15
13000001340-00	E20	22	13000001460-00	E23	8	13000001934-00	E25	17
13000001340-00	E22	30	13000001462-00	E23	16	13000001935-00	E25	7
13000001348-00	E23	5	13000001653-00	E26	N/A	13000001936-00	E25	4
13000001349-00	E23	2	13000001654-00	E26	N/A	13000001937-00	E25	10
13000001363-00	E9	3	13000001655-00	E26	N/A	13000001947-00	E25	11
13000001363-00	E10	3	13000001656-00	E26	N/A	13000001949-00	E14	10
13000001363-00	E11	3	13000001657-00	E26	N/A	13000001987-00	E24	2
13000001363-00	E12	3	13000001658-00	E26	N/A	13000001996-00	E24	4
13000001364-00	E9	5	13000001659-00	E26	N/A	13000001999-00	E24	1
13000001364-00	E10	5	13000001660-00	E26	N/A	13000002001-00	E24	6
13000001364-00	E11	5	13000001665-00	E1	4	13000002003-00	E24	5
13000001364-00	E12	5	13000001667-00	E1	6	13000002004-00	E24	7
13000001365-00	E9	4	13000001670-00	E9	14	13000002016-00	E3	14
13000001365-00	E10	4	13000001670-00	E10	14	13000002016-00	E4	20
13000001365-00	E11	4	13000001670-00	E11	14	13000002016-00	E6	21
13000001365-00	E12	4	13000001670-00	E12	18	13000002016-00	E8	18
13000001366-00	E9	2	13000001671-00	E3	2	13000002017-00	E3	6
13000001366-00	E10	2	13000001671-00	E25	20	13000002017-00	E4	12
13000001366-00	E11	2	13000001671-00	E4	5	13000002017-00	E6	15
13000001366-00	E12	2	13000001671-00	E6	5	13000002017-00	E8	3
13000001367-00	E12	11	13000001671-00	E8	6	13000002036-00	E24	8
13000001381-00	E4	2	13000001672-00	E25	6	13000002339-00	E16	21
13000001381-00	E6	2	13000001677-00	E25	12	13000002339-00	E18	21
13000001381-00	E8	2	13000001707-02	E4	27	13000002339-00	E20	11
13000001383-00	E6	35	13000001707-02	E6	27	13000002339-00	E22	18
13000001383-00	E8	35	13000001707-02	E8	27	13000002346-00	E1	7
13000001387-00	E9	12	13000001711-00	E25	9	13000002354-00	E3	17
13000001387-00	E10	12	13000001712-00	E25	14	13000002355-00	E4	25
13000001387-00	E11	12	13000001904-00	E20	7	13000002356-00	E6	23
13000001387-00	E12	16	13000001904-00	E22	20	13000002357-00	E8	23
13000001423-00	E18	16	13000001921-00	E3	21	13000002365-00	E9	10
13000001424-00	E20	26	13000001921-00	E4	19	13000002366-00	E10	10
13000001424-00	E22	41	13000001921-00	E6	19	13000002367-00	E11	10
13000001428-00	E16	6	13000001921-00	E8	17	13000002368-00	E12	14
13000001428-00	E18	6	13000001924-00	E3	4	13000002370-00	E3	8
13000001428-00	E20	30	13000001924-00	E4	18	13000002370-00	E4	14

INDEX

Part #	Page	Ref #	Part #	Page	Ref #	Part #	Page	Ref #
13000002370-00	E6	13	13000002444-00	E22	28	1300001091-00	E2	12
13000002371-00	E8	11	13000002484-00	E1	2	1300001924-00	E6	18
13000002372-00	E3	23	13000002503-00	E23	19	13-0702-05010	E20	28
13000002372-00	E4	9	13000002541-00	E25	21	13-0702-05010	E22	14
13000002372-00	E6	9	13000002553-00	E9	25	13-0702-05012	E2	4
13000002373-00	E8	21	13000002553-00	E10	25	13-0702-06044	E14	8
13000002376-00	E16	9	13000002553-00	E11	25	13-0702-06056	E3	18
13000002379-00	E16	31	13000002553-00	E12	29	13-0702-06056	E4	22
13000002379-02	E26	N/A	13000002588-00	E26	N/A	13-0702-06056	E6	3
13000002379-05	E26	N/A	13000002592-00	E26	N/A	13-0702-06056	E8	4
13000002379-06	E26	N/A	13000002593-00	E26	N/A	13-0702-06072	E12	10
13000002383-00	E16	16	13000002618-00	E23	25	13-0702-06096	E25	18
13000002384-00	E18	20	13000002619-00	E23	21	13-0702-06144	E3	5
13000002385-00	E20	12	13000002857-00	E26	N/A	13-0702-06144	E4	7
13000002385-00	E22	27	13000002868-00	E6	36	13-0702-06144	E6	8
13000002385-02	E26	N/A	13000002868-00	E8	36	13-0702-06144	E8	8
13000002386-00	E20	5	13000002870-00	E23	26	13-0702-07016	E3	16
13000002387-00	E22	15	13000002900-00	E26	N/A	13-0702-07016	E4	28
13000002387-01	E26	N/A	13000002901-00	E26	N/A	13-0702-07016	E6	26
13000002387-03	E26	N/A	13000002949-00	E26	N/A	13-0702-07016	E8	26
13000002388-00	E16	20	13000002950-00	E26	N/A	13-0702-07016	E14	20
13000002388-00	E18	18	13000002959-00	E2	7	13-0702-07020	E22	24
13000002388-00	E20	10	13000002964-00	E14	16	13-0702-07048	E14	24
13000002388-00	E22	25	13000003100-00	E22	43	13-0702-07056	E3	22
13000002389-00	E20	9	13000003117-00	E3	15	13-0702-07056	E4	8
13000002389-00	E22	19	13000003117-00	E4	26	13-0702-07056	E6	7
13000002390-00	E16	13	13000003117-00	E6	28	13-0702-07056	E8	22
13000002391-00	E18	13	13000003117-00	E8	28	13-0702-07064	E3	11
13000002392-00	E20	6	13000003143-00	E23	24	13-0702-07064	E4	11
13000002393-00	E22	17	13000003360-00	E6	30	13-0702-07064	E6	16
13000002394-00	E1	1	13000003360-00	E8	30	13-0702-07064	E8	14
13000002401-00	E1	3	13000003604-00	E18	9	13-0702-08020	E14	15
13000002433-00	E22	42	13000003605-00	E18	32	13-0702-08028	E23	15
13000002439-00	E14	29	13000003607-00	E20	4	13-0702-08048	E6	29
13000002440-00	E6	31	13000003608-00	E20	1	13-0702-08048	E8	29
13000002440-00	E8	31	13000003609-00	E20	37	13-0702-08064	E9	1
13000002441-00	E6	32	13000003614-00	E22	12	13-0702-08064	E10	1
13000002441-00	E8	32	13000003615-00	E22	10	13-0702-08064	E11	1
13000002442-00	E16	17	13000003616-00	E22	40	13-0702-08064	E12	1
13000002443-00	E16	3	13000003685-00	E26	N/A	13-0702-08096	E25	16
13000002443-00	E18	2	13000003689-00	E26	N/A	13-0702-10040	E4	1
13000002443-00	E20	25	13000003690-00	E26	N/A	13-0702-10040	E6	1
13000002443-00	E22	3	13000003691-00	E26	N/A	13-0702-10040	E8	1
13000002444-00	E16	22	13000003692-00	E26	N/A	13-0706-04010	E1	8
13000002444-00	E18	26	13000003864-00	E26	N/A	13-0709-04012	E16	27
13000002444-00	E20	16	13000004637-00	E2	17	13-0709-04012	E18	23

INDEX

Part #	Page	Ref #	Part #	Page	Ref #	Part #	Page	Ref #
13-0709-04012	E20	23	13-0725-00007	E6	12	13-0734-00007	E4	13
13-0709-04012	E22	37	13-0725-00007	E8	13	13-0734-00007	E6	14
13-0709-05016	E23	14	13-0725-00007	E14	3	13-0734-00007	E8	12
13-0709-06012	E22	39	13-0725-00007	E22	23	13-0734-00007	E14	19
13-0709-06016	E6	34	13-0725-00007	E23	22	13-0734-00007	E23	23
13-0709-06016	E8	34	13-0725-00008	E9	7	13-0734-00008	E9	6
13-0709-06016	E14	12	13-0725-00008	E10	7	13-0734-00008	E10	6
13-0709-06016	E16	18	13-0725-00008	E11	7	13-0734-00008	E11	6
13-0709-06016	E18	19	13-0725-00008	E12	7	13-0734-00008	E12	6
13-0709-06016	E20	13	13-0725-00008	E14	11	13-0734-00008	E14	13
13-0709-06016	E22	16	13-0725-00008	E23	10	13-0734-00008	E23	11
13-0709-06024	E1	11	13-0725-00012	E14	1	13-0734-00012	E3	7
13-0712-04008	E14	17	13-0729-00006	E25	3	13-0734-00012	E4	10
13-0712-04008	E16	23	13-0729-00008	E25	5	13-0734-00012	E6	17
13-0712-04008	E18	27	13-0729-00010	E4	24	13-0734-00012	E8	15
13-0712-04008	E20	15	13-0729-00010	E6	25	13-0735-00012	E3	12
13-0712-04008	E22	34	13-0729-00010	E8	25	13-0735-00012	E4	16
13-0712-04008	E23	3	13-0731-00004	E14	18	13-0735-00012	E6	11
13-0712-04012	E18	28	13-0731-00004	E16	25	13-0735-00012	E8	10
13-0712-04012	E20	21	13-0731-00004	E18	25	13-0736-00006	E12	12
13-0712-04012	E22	29	13-0731-00004	E20	24	13-0737-04032	E9	13
13-0712-05012	E16	12	13-0731-00004	E22	35	13-0737-04032	E10	13
13-0712-05012	E18	12	13-0731-00004	E23	6	13-0737-04032	E11	13
13-0712-06012	E16	10	13-0731-00006	E3	3	13-0737-04032	E12	17
13-0712-06012	E18	5	13-0731-00006	E1	10	13-0737-05040	E9	23
13-0712-06012	E20	3	13-0731-00006	E4	6	13-0737-05040	E10	23
13-0712-06012	E22	13	13-0731-00006	E6	6	13-0737-05040	E11	23
13-0712-06016	E3	19	13-0731-00006	E8	7	13-0737-05040	E12	27
13-0712-06016	E4	3	13-0731-00006	E16	19	13-0740-00807	E1	5
13-0712-06016	E6	22	13-0731-00006	E18	15	13-0740-00807	E16	4
13-0712-06016	E8	20	13-0731-00006	E20	2	13-0740-00807	E18	4
13-0712-06016	E16	5	13-0731-00006	E22	11	13-0740-00807	E20	34
13-0712-06016	E18	10	13-0731-00008	E6	33	13-0740-00807	E22	4
13-0712-06016	E20	31	13-0731-00008	E8	33	13-0740-00808	E2	8
13-0712-06016	E22	5	13-0732-00004	E16	30	13-0740-00808	E16	1
13-0724-00008	E25	19	13-0732-00004	E18	30	13-0740-00808	E18	1
13-0725-00005	E23	18	13-0732-00004	E20	20	13-0740-00808	E20	32
13-0725-00006	E3	1	13-0732-00004	E22	33	13-0740-00808	E22	7
13-0725-00006	E4	21	13-0734-00005	E23	17	13-0740-00808	E23	4
13-0725-00006	E6	20	13-0734-00006	E3	20	13-0740-00809	E2	19
13-0725-00006	E8	19	13-0734-00006	E4	4	13999900045-00	E26	N/A
13-0725-00006	E12	13	13-0734-00006	E6	4	13999900065-00	E26	N/A
13-0725-00006	E14	4	13-0734-00006	E8	5	N/A	E25	1
13-0725-00007	E3	9	13-0734-00006	E14	5	N/A	E25	2
13-0725-00007	E4	15	13-0734-00007	E3	10	N/A	E25	8

Limited Warranty Statement

1. Meridian Manufacturing Inc warrants each new Meridian Manufacturing Inc product (the "Goods") to be free from defects in material and workmanship under normal use and service for a period of two (2) years or ninety (90) days in the case of commercial use, from the shipment date from the Meridian dealer (FCA).
2. Meridian warrants replacement parts and components either manufactured or sold by, will be free from defects in materials or workmanship under normal use and service for thirty (30) days from the shipment date from the Meridian dealer (FCA), or the remainder of the original warranty period on the Goods, whichever is longer.
3. This warranty does not apply to:
 - a) to any merchandise or components thereof, which in the sole and unfettered opinion of Meridian, have been subject to misuse, unauthorized modifications, alteration, accident, negligence, product abuse or lack of required maintenance.
 - b) if repairs have been made with parts or by persons other than those parts or persons approved by Meridian.
 - c) to parts and accessories not manufactured by Meridian including, but not limited to, engines, batteries, tires, belts, PTO shafts or other trade accessories. Such parts shall be covered by the warranty given by the actual manufacturer, if any.
 - d) to failure of parts; or failure of parts to perform due to wear under normal or excessive service conditions; or to failure due to use by the Purchaser for purposes other than originally intended at time of manufacture, including without limitation using the Goods for mixing fertilizer, etc.; or used in excess of the built specifications.
 - e) to Goods used in areas exposed to corrosive or aggressive conditions including, but not limited to, salt water from either inside or outside the Goods.
 - f) to failures or defects arising out of damage during shipment or during storage.
 - g) to materials replaced or repaired under this warranty, except to the extent of the remainder of the applicable warranty.
4. The obligation of Meridian under this warranty shall not arise unless Meridian is notified and this warranty is presented together with a written statement specifying the claim or defect within thirty (30) days after the failure is first detected or made known to the Purchaser and within: (i) two (2) years, or ninety (90) days in the case of commercial use; or (ii) thirty (30) days in the case of replacement parts and components manufactured by Meridian; from the shipment date from the Meridian dealer (FCA). Meridian in its sole and unfettered discretion shall determine if the claim is valid and whether correction of the defect or failure shall be made by repair or replacement of the materials.
5. Title to any replaced materials Meridian wishes to have pass to it, shall pass to Meridian.
6. The obligation of Meridian hereunder extends only to the original Purchaser or Buyer to whom the Goods were initially sold. This warranty shall not be subject to any assignment or transfer without the written consent of Meridian.
7. The purchaser acknowledges that it has made its own independent decision to approve the use of the Goods and also the specific fabrication and construction procedures utilized to complete the Goods, and has satisfied itself as to the suitability of these products for its use.

8. This warranty is subject to the following limitations, provisions and conditions:
- a) Meridian shall have no liability hereunder for any claims, including field re-work.
 - b) Meridian shall not be liable for any incidental loss or damage, however caused, including, without limitation, normal wear and tear.
 - c) Meridian makes no express or implied warranties of any nature whatsoever except for such express warranties as set out herein. The warranty provided herein is in lieu of and excludes all other warranties, guarantees or conditions pertaining to the Goods, written or oral, statutory, express or implied, (except the warranty as to title) including any warranty as to the merchantability or fitness for any particular purpose. Meridian expressly disclaims all other representations, conditions or warranties, expressed or implied, statutory or otherwise and any representations, warranties or conditions that may arise from a course of dealing or usage of trade. The warranty provided herein shall constitute Meridian's sole obligation and liability and the Purchaser's sole remedy for breach of warranty. No other warranty has been made by any employee, agent, or representative of Meridian and any statements contained in any other printed material of Meridian is expressly excluded herefrom. Meridian shall not be responsible for any warranty offered by the Purchaser to its customers with respect to the Goods and the Purchaser shall indemnify Meridian with respect to same if any of those customers makes a claim against Meridian relating to any such warranty.
 - d) Subject to Meridian's obligations contained in paragraphs 1 and 2 herein, none of Meridian, its officers, directors, servants or agents shall be liable, or responsible for any loss or damage (including strict liability and liability for loss or damage due to items which the manufacturing processes are designed to identify) whether such loss or damage is caused by negligence in any manner whatsoever (including gross negligence, error, misrepresentation, misstatement, imprudence, lack of skill or lack of judgement).
9. The sole financial obligation of Meridian under this warranty shall be limited to the repair or replacement of the Goods as originally supplied and in no event shall they exceed the original cost of the Goods supplied.
10. Meridian shall not have any obligation under any warranty herein until all accounts have been paid in full by the Purchaser.
11. The construction and interpretation of this Warranty shall be governed by the laws of the Province of Saskatchewan.

Warranty Claim Procedure

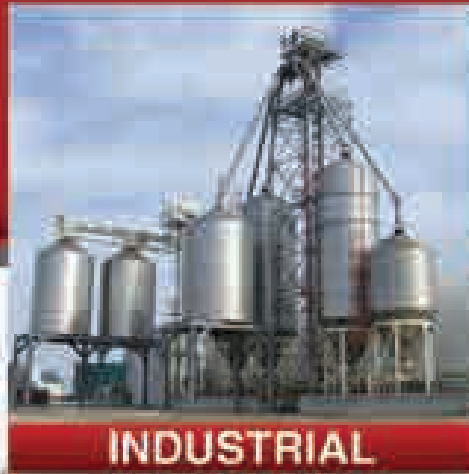
- 1. Purchaser must register the Goods with Meridian.
- 2. Purchaser must contact the dealer where the unit was purchased from upon discovery of any defects.
- 3. A completed warranty claim form must be submitted by the dealer to Meridian's warranty representative for review and any subsequent course of action.
- 4. Warranty repair work will only be performed by Meridian or an approved representative of Meridian. No warranty work completed prior to approval by Meridian will be honored. Failure to follow procedure may affect any or all of this warranty.
- 5. Claims will be adjudicated at the sole discretion of Meridian and in accordance with the terms and conditions of the limited warranty.

MERIDIAN MANUFACTURING INC.

With over 65 years of experience,
Meridian is your storage and handling expert.



AGRICULTURAL



INDUSTRIAL



OIL & GAS

Cambridge Office
805 Sheldon Drive
Cambridge, ON N1T 3K1
PH: 519 620 6004
TF: 800 348 3712
FX: 519 620 6041

Camrose Office
4222 - 38 St.
Camrose, AB T4V 4B3
PH: 780 672 4516
TF: 800 825 2467
FX: 780 672 4758

Lethbridge Office
3125 - 34 Ave. N.
Lethbridge, AB T1H 5G3
PH: 403 305 7070
TF: 800 361 1430
FX: 403 305 7579

Regina Office
PO Box 1699
Regina, SK S4P 2E1
PH: 306 540 4044
TF: 800 667 5904
FX: 306 348 4219

Storn Lake Office
2902 Esplanade Blvd.
Storn Lake, SK S0G 0G0
PH: 312 733 7780
TF: 800 457 2338
FX: 312 733 7528

Winkler Office
Box 765, 275 Hepler Ave.
Winkler, MB R6W 4A5
PH: 204 325 7853
TF: 800 665 7359
FX: 204 325 5558

MERIDIAN
www.meridianmfg.com