

AUGERS

MERIDIAN®



MERIDIAN®

AUGERS





## PEOPLE.

The driving force at Meridian Manufacturing is the committed ingenuity of employees and dealers, as well as relationships built with our valued customers. Our team takes pride in the work we do and are committed to delivering innovative and reliable storage and handling products.



## PRODUCTS

For Meridian Manufacturing, integrity means setting standards in product and service excellence. As a proven industry leader, our commitment to product innovation and customer support is our greatest pursuit.




## PERFORMANCE

Our people and products deliver quality performance for you and your operation. We believe that when you are successful, so are we.

## MERIDIAN AUGERS

# SMOOTH, FAST, & RELIABLE



Augers that run smoother, run longer. The Meridian Auger's Continuous Super-Edge Flighting™ runs quieter and smoother than other flighting, reducing operating stress and offering capacities up to 15,000BPH. With over 70 years of proven experience, you can depend on Meridian augers.



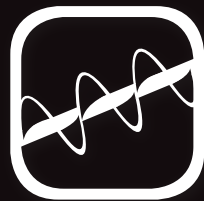


14” SWING AUGERS

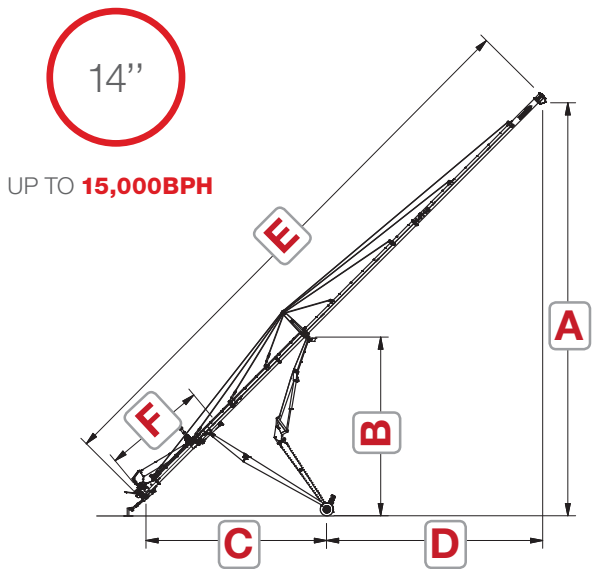


THE **MERIDIAN 14” SWING AUGER** IS **RELIABLE, QUIET** & MOVES UP TO **15,000BPH**

14-95 PICTURED



Move your grain fast and efficient with a Meridian 14” Swing Auger. This high capacity auger moves up to 15,000 bushels an hour with unmatched durability and is one the quietest augers on the market.



AUGER TUBE	14" OD x 11 gauge	UNDERCARRIAGE	385/65R X 22.5 floatation tires
AUGER FLIGHT	Cupped Super Edge™ on 3" core	POWER REQUIRED	170 - 225 HP Tractor
DRIVE	Tractor PTO 1000 rpm	CAPACITY PER HOUR	14,000 - 15,000 Bushels per hour
LIFT	Dual 5 1/2" OD Cylinders, Lifting Pressure 2200 psi	HOPPER SIZE	46" W x 74" L x 143/4" H
SWING AUGER	Low Profile, PTO driven, steel cut sprockets, high speed roller chain	REDUCING GEARBOX	3 1/4 L of 8090 Gear Oil

FEATURES

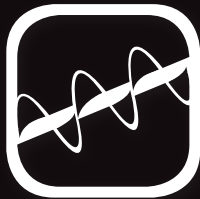
- Cable truss system - provides stability for heavy loads
- Each cable works on a three point system to eliminate tube sag between lock points
- Side cables located at main auger to reduce tube sway
- Hydraulic worm gear winch located at the hopper lift arm
- Heavy duty gearboxes
- High capacity 16" diameter mechanical drive swing auger
- Head-end features a heavy duty thrust bearing
- Product overflow doors located at the discharge end of the auger - prevents auger plugging when the bin is full
- Electric mover on swing hopper (optional)
- 1000 rpm pto speed with a speed reducing gearbox
- Powder coated finish

14” SWING AUGERS

		14-95		14-105		14-115			
		FIXED AXLE		FIXED AXLE		AXLES RETRACTED		AXLES EXTENDED	
		FEET	METERS	FEET	METERS	FEET	METERS	FEET	METERS
A	RAISED	69' 3"	21.1	76' 4"	25.7	83'3	25.4	84'2	25.3
	LOWERED	9' 4"	2.8	10' 3"	3.1	12' 1"	3.7	13' 3"	4
B	RAISED	36' 2"	11	36' 2"	11	36' 5"	11.1	36' 9"	11.2
	LOWERED	5' 3"	1.6	5' 3"	1.6	5'11"	1.8	6' 6"	2
C	RAISED	37'	11.3	37'	11.3	37'	11.3	37'	11.3
	LOWERED	46'	14	46'	14	46' 5"	14.1	46' 5"	14.1
D	RAISED	29' 8"	9	36' 9"	11.2	42' 10"	13.1	41' 11"	12.8
	LOWERED	46' 7"	14.2	56' 8"	17.3	66' 2"	20.2	66'	20.1
E	TUBE LENGTH	95'	29	105'	32	115'	35.1	115'	35.1
F	SWING LENGTH	20' 5"	6.2	20' 5"	6.2	20' 5"	6.2	20' 5"	6.2
	WIDTH	13'	4	13'	4	14' 3"	4.3	17' 5"	5.3
	TRANSPORT LENGTH	96' 4"	29.4	106' 5"	32.5	116' 4"	35.5m	n/a	n/a
		LBS	KGS	LBS	KGS	LBS		KGS	
	AUGER WEIGHT	11,420	5,180	11,714	5,314	12,028		5,456	
	AUGER HITCH WEIGHT	3,010	1,365	2,585	1,173	2,160		980	



10" & 12" SWING AUGERS

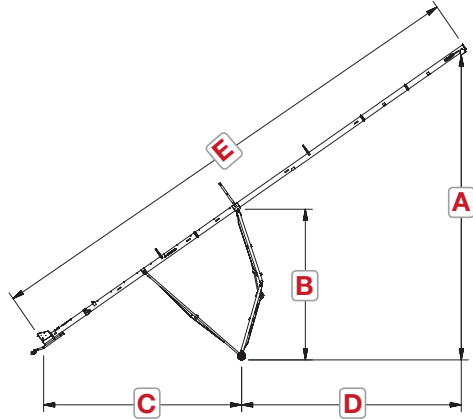


Meridian’s scissor lift mechanical drive grain auger provides durable, steadfast quality farmers can rely on to move product efficiently and without worry. Meridian augers are powder coated, producing a long lasting finish. At Meridian, the reversing kit comes standard with our swing augers. Our hopper lift can accommodate any operating situation by placing the hopper on the left or right hand side of the main tube.

FEATURES

- Cable truss system - provides stability for heavy loads
- Each cable works on a three point system to eliminate tube sag between lock points
- Side cables located at main auger to reduce tube sway
- Hydraulic worm gear winch located at the hopper lift arm
- Heavy duty gearboxes
- High capacity 16" diameter mechanical drive swing auger
- Head-end features a heavy duty thrust bearing
- Product overflow doors located at the discharge end of the auger - prevents auger plugging when the bin is full
- Electric mover on swing hopper (optional)
- 1000 rpm pto speed with a speed reducing gearbox
- Powder coated finish

10" & 12" SWING AUGERS



	10"	12"
	UP TO <b>6,000BPH</b>	UP TO <b>10,000BPH</b>
	SLMD10	SLMD12
AUGER TUBE	10" OD x 13 Gauge	12" OD x 12 Gauge
AUGER FLIGHT	Continuous Cup 1/4" Super Edge <sup>SM</sup> Flight	Continuous Cup 1/4" Super Edge <sup>SM</sup> Flight
DRIVE	540 rpm Tractor PTO	540 rpm Tractor PTO
SWING AUGER	10" Diameter Mechanical Drive c/w Brake Winch	12" Diameter Mechanical Drive c/w Brake Winch
WHEELS	16" Rims c/w Tapered Roller Bearings	16" rims c/w Tapered Roller Bearings
POWER REQUIRED	50 - 90 HP Tractor	100 HP - 120 HP Tractor
CAPACITY PER HOUR	4500 - 6000 Bushels	7800 - 9000 Bushels
STANDARD HOPPER SIZE	35-3/4" W x 52" L x 10-1/4" H c/w Patented Reverse Flighting	41-1/2" W x 52" L x 14-1/4" H c/w Patented Reverse Flighting

		SLMD 10-66		SLMD 10-72		SLMD 12-72		SLMD 12-79		SLMD 12-85		SLMD 12-95	
		Feet	Meters	Feet	Meters	Feet	Meters	Feet	Meters	Feet	Meters	Feet	Meters
A	RAISED	42'	12.8	46' 1"	14.1	45' 6"	13.9	49' 6"	15.1	53' 7"	16.3	57' 1"	17.4
	LOWERED	12' 2"	3.1	12' 2"	3.7	10' 9"	3.3	10' 9"	3.3	10' 9"	3.3	14' 6"	4.4
B	RAISED	22' 11"	7	25'	7.6	25' 4"	7.7	27' 4"	8.3	29' 4"	8.9	29' 4"	8.9
	LOWERED	6' 9"	2.1	6' 8"	2	6' 7"	2	6' 7"	2	6' 7"	2	6' 7"	2
C	RAISED	28' 2"	8.6	30' 5"	9.3	30' 6"	9.3	33' 2"	10.1	35' 9"	10.9	35' 9"	10.9
	LOWERED	33' 4"	10.2	36' 7"	11.2	39' 9"	12.1	43' 1"	13.1	46' 5"	14.2	46' 5"	14.2
D	RAISED	23' 5"	7.1	26' 3"	8	25' 8"	7.8	28' 3"	8.6	30' 10"	9.4	40' 10"	12.5
	LOWERED	29' 8"	9	33' 1"	10.1	31' 5"	9.6	34' 9"	10.6	38'	11.6	52'	15.9
E	LENGTH	65' 7"	20	72' 2"	22	72' 6"	22.1	79'	24	85' 7"	26.1	95' 7"	29.1
		LBS	KG	LBS	KG	LBS	KG	LBS	KG	LBS	KG	LBS	KG
AUGER HITCH WEIGHT		1040lb	470kg	1060lb	480kg	1400lb	635kg	1420lb	645kg	1440lb	655kg	1400lb	635kg
AUGER WEIGHT		3887lb	1763kg	4252lb	1929kg	6015lb	2728kg	6214lb	2818kg	6462lb	2931kg	6506lb	2951kg



# SWING AUGER FEATURES



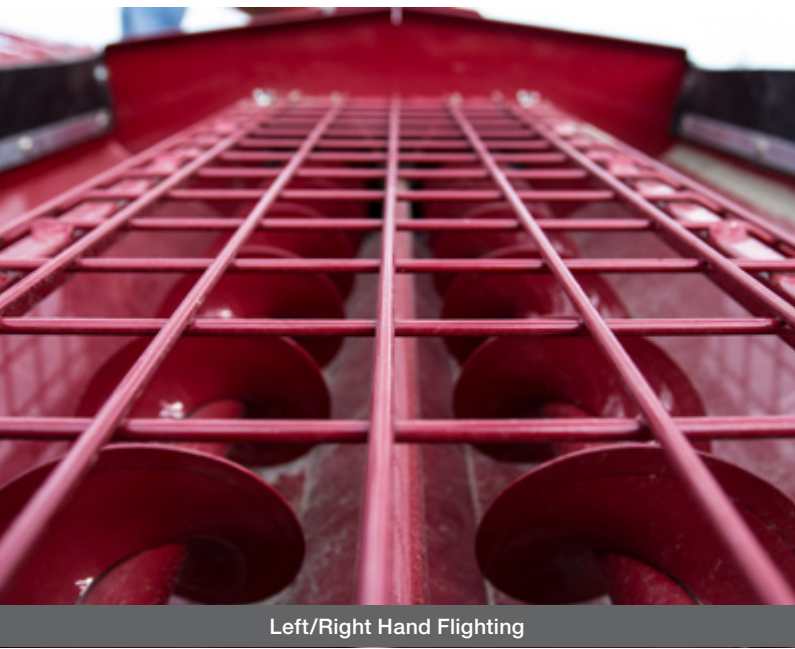
Electric Swing Hopper Mover



Electric Swing Hopper Mover

Now you can do two things at the same time with a wireless remote control mover designed to increase farm safety and improve working conditions.

This design gives you the ability to move the hopper and the swing tube with a wireless transmitter making grain handling easier and more efficient. No other off the shelf product compares in terms of cost of applications. These swing movers are a one-time investment that will benefit your grain hauling for many years.



Left/Right Hand Flighting

Meridian was the original designer and patent holder of left/right hand hopper flighting. Meridian's left and right hand flighting ensures fast and efficient flow into the main tube.



Extendable Axle

Meridian swing augers features a standard extendable axle. 10" & 12" SLMD axle shown above.



Hydraulic Winch and Lift Arm

Raise or lower the hopper and swing tube with ease. The lift arm and winch can be quickly mounted on the left or right of the tube, allowing for unloading from either side of the swing auger.

## SWING AUGERS



Tube Connections

Meridian augers feature precision spline tube connectors. These unique tube connections allows the flighting to flex and move without adding additional strain to the bearings on the top or bottom end.



LED Light Kit

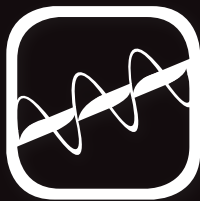
Never lose sight of your work area with Meridian's positive ground, engine-powered LED lighting kits.





MERIDIAN CONVENTIONAL AUGERS  
REDEFINE **DURABILITY** & **CAPACITY**.

TL12-39 PICTURED

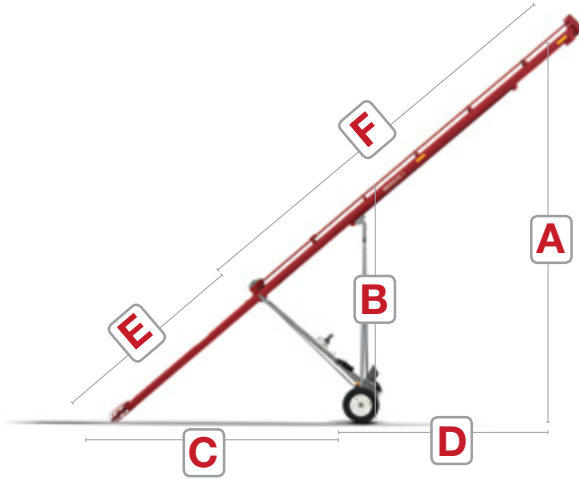
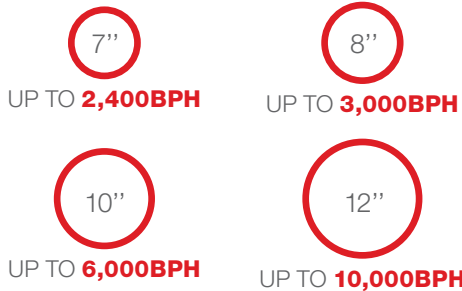


Meridian HD conventional augers are built to be rugged, dependable and versatile. Our square structural undercarriage, offset axle, self-leveling motor mount, continuous Super Edge™ Flighting (up to 53') and unique seamless tube connectors on 46' augers and up are all standard features.

For unparalleled manoeuvrability, add our 4 Wheel Frame mounted mover. The Meridian conventional auger is available in 7", 8", 10" & 12" diameter's and offer capacities from 2,400-10,000 BPH. Ask about fully equipped packages.

CONVENTIONAL AUGERS

AVAILABLE DIAMETERS



		HD33		HD39		HD46		HD53		HD59		TL39	
		FEET	METERS	FEET	METERS	FEET	METERS	FEET	METERS	FEET	METERS	FEET	METERS
A	RAISED	19' 11"	6.1	23' 7"	7.2	27' 7"	8.4	31' 6"	9.6	33' 6"	10.8	23' 7"	7.2
	LOWERED	8' 7"	2.6	8' 5"	2.6	9' 9"	3.0	11' 3"	3.4	12' 8"	3.9	8' 5"	2.6
B	RAISED	11' 1"	3.4	13' 1"	4.0	15' 5"	4.7	18' 0"	5.5	20' 4"	6.2	13' 1"	4.0
	LOWERED	7' 0"	2.1	7' 2"	2.2	8' 6"	2.6	9' 2"	2.8	10' 9"	3.3	7' 2"	2.2
C	RAISED	14' 7"	4.4	19' 3"	5.9	20' 9"	6.3	23' 8"	7.2	26' 9"	8.2	19' 3"	5.9
	LOWERED	19' 0"	5.8	21' 8"	6.6	25' 11"	7.9	29' 7"	9.0	33' 9"	10.3	21' 8"	6.6
D	RAISED	11' 9"	3.6	13' 5"	4.1	15' 1"	4.6	18' 1"	5.5	19' 9"	6.0	13' 5"	4.1
	LOWERED	13' 1"	4.0	15' 0"	4.6	18' 7"	5.7	21' 5"	6.5	23' 7"	7.2	15' 0"	4.6
E	LENGTH	10' 6"	3.2	12' 6"	3.8	14' 9"	4.5	16' 9"	5.1	19' 0"	5.8	12' 6"	3.8
F		21' 6"	6.6	25' 3"	7.7	29' 6"	9.0	32' 1"	10.4	28' 3"	11.7	25' 3"	7.7
AUGER WEIGHT BY DIAMETER		7" 820 lbs 372 kgs	8" 950 lbs 431 kgs	7" 930 lbs 422 kgs	8" 1,070 lbs 485 kgs	7" 1,040 lbs 472 kgs	8" 1,200 lbs 544 kgs	7" 1,190 lbs 540 kgs	8" 1360 lbs 617 kgs	8" 1,480 lbs 871 kgs		10" 1,180 lbs 535 kgs	
							10" 1,530 lbs 694 kgs		10" 1,680 lbs 762 kgs		10" 1,860 lbs 844 kgs		12" 1,740 lbs 789 kgs

	HD7	HD8	HD10	TL10	TL12
AUGER TUBE	7" OD x 16 gauge tubing	8" OD x 14 gauge tubing	10" OD x 13 gauge tubing	10" OD x 14 gauge tubing	12" OD x 12 gauge tubing
FLIGHT	11 gauge	10 gauge	9 gauge	9 gauge	7 gauge
DRIVE	Available drive options are gas engine, electric motor or PTO				
BELT	Banded Double V-Belt	Banded Double V-Belt	Banded Triple V-Belt	Banded Double V-Belt	Banded Triple V-Belt
UNDERCARRIAGE (HSS TUBING)	2 1/2" x 2 1/2" x 1/8"	2 1/2" x 2 1/2" x 1/8"	3" x 3" x 1/8"	2 1/2" x 2 1/2" x 1/8"	3" x 3" x 1/8"
WHEELS	15" wheels c/w tapered roller bearings				
MOTOR MOUNT	Patented self-leveling motor mount with built in belt tension release				
POWER REQUIRED	14-16 HP Gas 5 – 7.5 HP Electric	20 HP Gas 10 HP Electric	35 HP Gas 20 HP Electric	27-30 HP Gas 20 HP Electric	40-50 HP Gas 20 HP Electric
CAPACITY PER HOUR	1,800 - 2,400 bushels of wheat	2,400 - 3,000 bushels of wheat	4,500 - 6,000 bushels of wheat	4,500 - 6,000 bushels of wheat	8,000 - 10,000 bushels of wheat



Auger Movers

Backed by over 70 years experience in the design and fabrication of short-line grain handling equipment, our auger movers are built strong, stable and versatile. Designed for conventional augers, our four wheel movers have been engineered to fit between most above ground hopper legs. With no undercarriage that connects the walking beams to the auger axle, the operator is allowed unrestricted movement around and underneath the auger. In addition, the mover wheels are set on independent walking beams for increased stability as high-quality gear pumps supply hydraulic power to the system. Finally, our unique design helps the operator because no matter how high or low the auger is, the controls are always at waist level, right in front of you.



4 Wheel Mover



Electric Clutch

Designed specifically for the auger industry, our clutch can accommodate double-belt-drive and triple-belt-drive augers and can shut down the auger flighting, even from inside the bin.

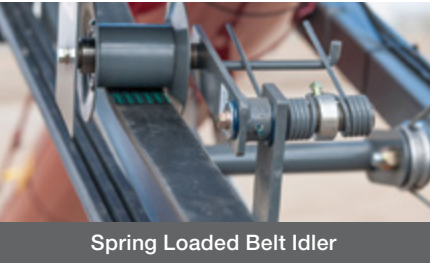
The pump pulley always turns with the crankshaft and is independent of the clutch pulley, allowing the supply of hydraulic power when the clutch is disengaged. In addition, our magnetic switch boxes can be placed anywhere on the auger and uses an exclusive cover to prevent accidental activation.

A Meridian electric clutch kit comes pre-wired, complete with a magnetic steel switch box, clutch and everything you need to install it. Just bolt the clutch in place and plug it together, or order it installed on a new Meridian conventional belt drive auger.



Reversible Gearbox Shifter

Our reversible gearbox is standard and allows the operator to reverse without flipping the auger belts by hand. An optional shifter lever is mounted down towards the intake, allowing the operator to shift the gearbox even when the auger is in an elevated position. Combine our electric clutch with the reversible gearbox and an operator can clean out the grain auger safely, conveniently and efficiently in a matter of seconds.



Spring Loaded Belt Idler

Specifically designed for longer augers, Meridian's spring loaded belt idler will reduce belt wear and remove whip common with long belts under load.

CONVENTIONAL AUGERS



Gas or Diesel Engines

Meridian only offers engines that are expertly engineered, extremely dependable and come fully assembled. Now you can push your auger to its limits with a powerful engine designed to get more done in less time. Winter kits and Diesel options are available. Ask your dealer for details.



Self-Leveling Motor Mount

Meridian was the original designer and patent holder of the Self Leveling Motor Mount. Meridian's self-leveling motor mount ensures consistent belt tension regardless of the height of the auger.



Shovel and Shovel Holder



LED Light Kit

Never lose sight of your work area with Meridian's positive ground, engine-powered LED lighting kits.



Banded Belt Drives

Our banded belt drive gives you better grip on drive pulleys and eliminates single belt slipping. Combine it with our electric clutch for smoother operation and less whipping.





WE OWN **8 MERIDIAN TRUCK LOAD  
AUGERS** AND **WE'VE NEVER HAD  
ANY ISSUES.**

WALT SMITH, SMITH FAMILY SEEDS

PEOPLE. PRODUCTS. PERFORMANCE.

**MERIDIAN**<sup>®</sup>





**PEOPLE. PRODUCTS. PERFORMANCE.**

[meridianmfg.com](http://meridianmfg.com) | [augers@meridianmfg.com](mailto:augers@meridianmfg.com) | (800) 667-5904